

Terminal Blocks



Connecting to **the Future**



IMO has been manufacturing innovative control components since 1970. In that time, the company has led the way in technology from the introduction of the first ever BT Approved telecom relay to the first ever miniature pitch terminal block. The continuous expansion of the company's manufacturing resources and the development of strategic alliances with manufacturing centres of excellence ensure that IMO continues to produce the finest quality products at highly competitive prices.

The IMO terminal block range continues this tradition of excellence incorporating design features which overcome problems typically encountered by our customers when using products of this type. Our continuous investment in tooling not only enhances production of a comprehensive range of standard devices but also permits customer specific designs to be undertaken. If you are seeking quality at affordable pricing then look no further than IMO.



IMO stellt seit 1970 innovative Steuerungsbauteile her. In dieser Zeit ist das Unternehmen technologisch wegweisend gewesen: von der Einführung des allerersten von der britischen Telekom (BT) zugelassenen Telekommunikationsrelais bis zum allerersten Miniatur-Pitch-Terminalblock. Der kontinuierliche Ausbau der Fertigungsressourcen des Unternehmens und die Schließung strategischer Allianzen mit Fertigungs-Exzellenzzentren gewährleisten, dass IMO weiterhin Produkte feinsten Qualität zu sehr kompetitiven Preisen herstellt.

Das IMO Terminal Block-Sortiment setzt diese Tradition der Exzellenz fort, indem es Designmerkmale integriert, die Probleme überwinden, auf die unsere Kunden typischerweise beim Einsatz von Produkten dieser Art stoßen. Unsere kontinuierliche Investition in Anlagen verbessert nicht nur die Produktion eines umfassenden Sortiments an Standardprodukten, sondern ermöglicht auch die Realisierung kundenspezifischer Designs. Wenn Sie Qualität zum günstigen Preis suchen, sind Sie bei IMO genau richtig.



IMO fabrique des composants de contrôle innovants depuis 1970. La société n'a pas cessé depuis d'être à l'avant-garde de la technologie, depuis l'introduction du tout premier relais de télécommunications agréé par BT au tout premier bloc de jonction à pas miniature. L'expansion continue des ressources de fabrication de notre société, ainsi que le développement d'alliances stratégiques avec des centres d'excellence chargés de la fabrication sont la garantie que la société IMO est en mesure de continuer à produire des produits de la plus haute qualité à des prix extrêmement compétitifs.

La gamme de blocs de jonction IMO poursuit cette tradition d'excellence en incorporant des caractéristiques conceptuelles capables de résoudre les problèmes habituellement rencontrés par nos clients lorsqu'ils utilisent des produits de ce type. Nos investissements continus dans l'outillage facilitent non seulement la fabrication d'une vaste gamme d'appareils standards, mais nous permettent aussi de réaliser des produits répondant aux spécifications du client. Si vous recherchez des produits de qualité à des prix abordables, c'est IMO qu'il vous faut.



IMO produce componenti di controllo innovativi fin dal 1970. In tutti questi anni l'azienda è sempre stata all'avanguardia dal punto di vista tecnologico: dall'introduzione del primo relè per telecomunicazioni con omologazione BT al primo blocco di terminali a passo miniaturizzato. L'ininterrotta espansione delle risorse produttive dell'azienda e le alleanze strategiche con centri produttivi di eccellenza garantiscono che IMO continui a realizzare prodotti della migliore qualità a prezzi altamente competitivi.

La gamma di blocchi di terminali IMO porta avanti questa tradizione di eccellenza grazie a caratteristiche specifiche in grado di risolvere i problemi che spesso incontrano i clienti quando utilizzano prodotti di questo tipo. La nostra politica di investire continuamente in nuove attrezzature non solo potenzia la produzione di una gamma completa di dispositivi standard, ma permette anche di realizzare progetti specifici per il cliente. Se quello che cercate è la qualità a prezzi ragionevoli, IMO è ciò che fa per voi.



IMO ha estado fabricando componentes de control innovadores desde 1970. Durante este tiempo, la empresa ha sido líder en tecnología, desde la introducción de su primer relé de telecomunicación con homologación BT hasta su primer bloque de terminales de paso miniatura. La continua expansión de los recursos de fabricación de la empresa y el desarrollo de alianzas estratégicas con centros de fabricación de excelencia asegura que IMO continúe fabricando productos de la mejor calidad a precios altamente competitivos.

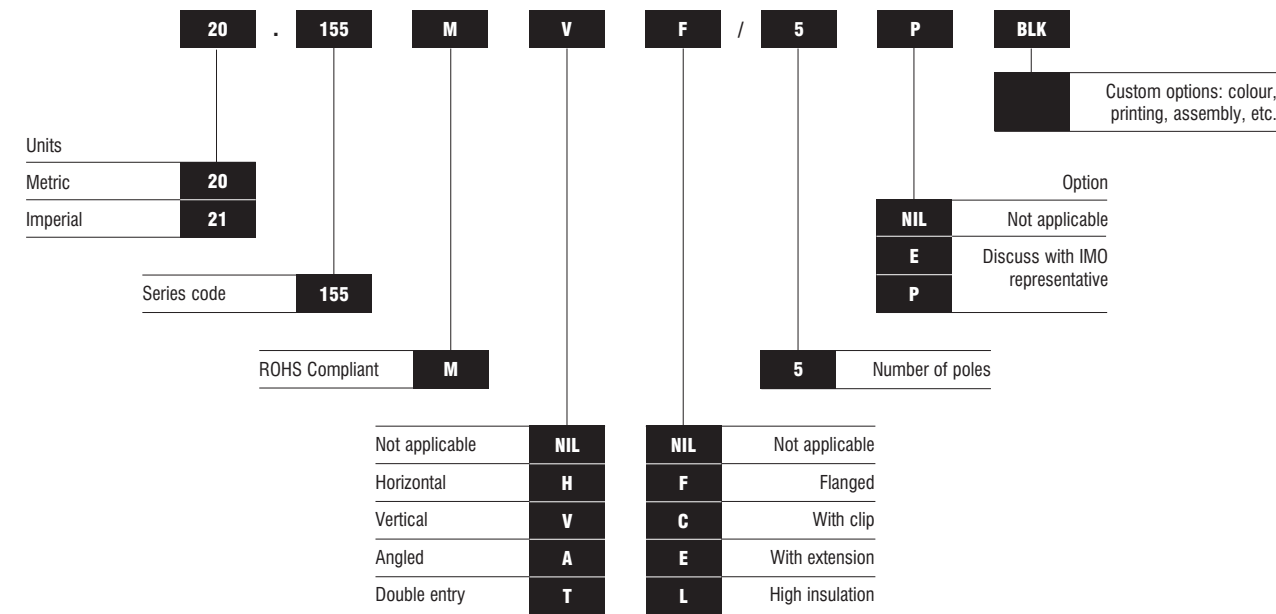
La gama de bloques de terminales continúa esta tradición de excelencia incorporando características de diseño que superan los problemas con los que se encuentran normalmente nuestros clientes al utilizar productos de este tipo. Nuestra continua inversión en utillaje no solo mejora la producción de una gama completa de dispositivos estándar, sino que también permite realizar diseños específicos del cliente. Si está buscando calidad a precios asequibles, no busque otra cosa que no sea IMO.



IMO производит инновационные компоненты систем управления с 1970 года. С этого времени компания заняла свое положение на технологическом рынке, начиная от представления самого первого утвержденного ВТ телекоммуникационного реле и до самой первой миниатюрной клеммной панели. Непрерывное расширение производственных возможностей компании и развитие стратегических отношений с производственными центрами гарантируют, что IMO все также продолжит производить самый качественный товар по конкурентоспособным ценам.

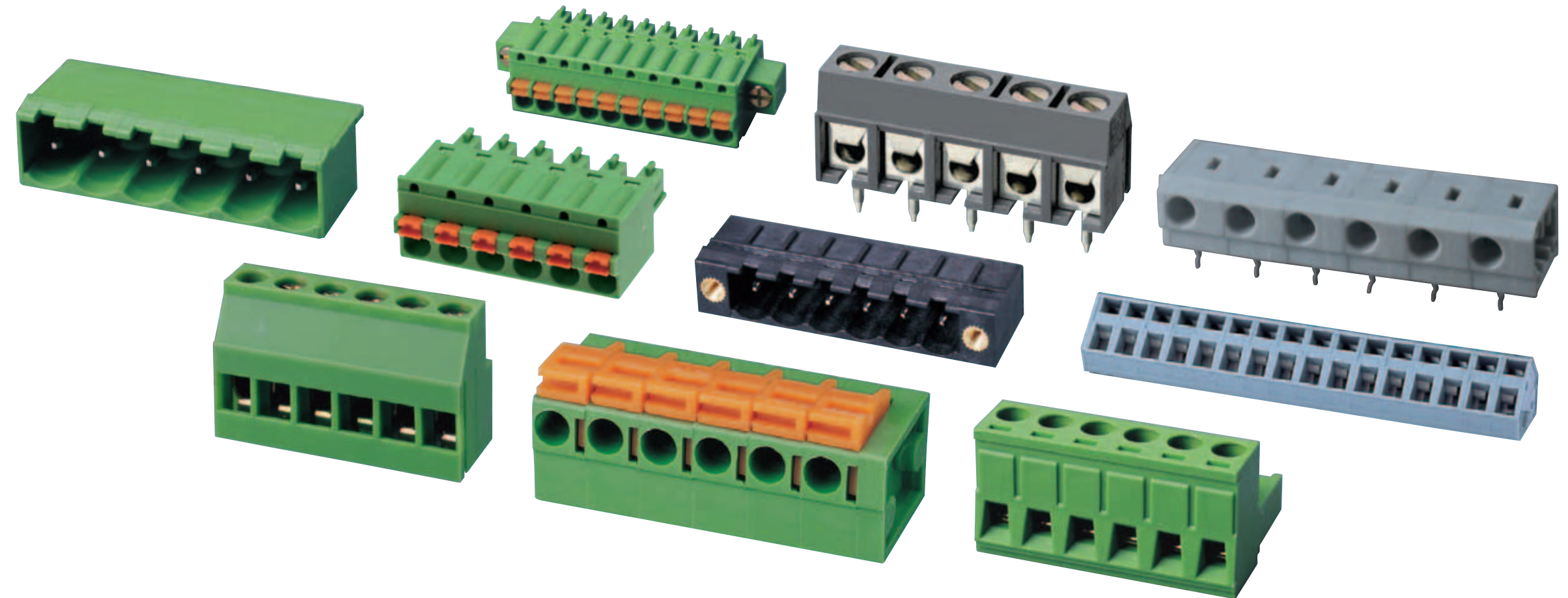
Линия клеммных колодок IMO продолжает данную традицию технического превосходства продукции, позволяющей преодолеть проблемы, с которыми, как правило, сталкиваются наши заказчики при использовании решений данного типа. Наши постоянные инвестиции в разработку новых решений позволяют нам предлагать своим клиентам не только стандартные устройства, но и изготовленные на заказ конфигурации. Если вы ищете качественные решения по привлекательной цене, то останавливайтесь на продукции IMO.

How to order:



Contents

| | |
|---------------------------------------|----|
| ■ Connecting to the future | 6 |
| ■ Standard Type PCB Terminal Blocks | 8 |
| ■ Rising Clamp PCB Terminal Blocks | 14 |
| ■ Pluggable Terminal Blocks - Headers | 26 |
| ■ Pluggable Terminal Blocks - Plugs | 38 |
| ■ Screwless Terminal Blocks | 54 |



| | | | | |
|------------------|-----------------------------|------------------------|---------------------------------|----------------------------|
| Abstand/Winkel | Pas | Passo | Paso | Шаг |
| Technische Daten | Caractéristiques techniques | Dati tecnici | Datos técnicos | Технические характеристики |
| Nennspannung | Tension nominale | Tensione nominale | Voltaje nominal | Номинальное напряжение |
| Nennstrom | Courant nominal | Corrente nominale | Corriente nominal | Номинальный ток |
| Kabelbereich | Calibre de fils | Gamma fili | Gama de cables | Сечение провода |
| Nennstoßspannung | Sur-tension nominale | Sovratensione nominale | Voltaje de sobretensión nominal | Доступные опции |
| Schraube | Vis | Vite | Tornillo | Винт |
| Pol | Pôle | Polarità | Polo | Плюс |



| | | | | |
|------------------|-----------------------------|------------------------|---------------------------------|----------------------------|
| Abstand/Winkel | Pas | Passo | Paso | Шаг |
| Technische Daten | Caractéristiques techniques | Dati tecnici | Datos técnicos | Технические характеристики |
| Nennspannung | Tension nominale | Tensione nominale | Voltaje nominal | Номинальное напряжение |
| Nennstrom | Courant nominal | Corrente nominale | Corriente nominal | Номинальный ток |
| Kabelbereich | Calibre de fils | Gamma fili | Gama de cables | Сечение провода |
| Nennstoßspannung | Sur-tension nominale | Sovratensione nominale | Voltaje de sobretensión nominal | Доступные опции |
| Schraube | Vis | Vite | Tornillo | Винт |
| Pol | Pôle | Polarità | Polo | Плюс |

IMO: connecting to the future



IMO are proud to introduce one of the most comprehensive terminal block ranges available in the market. The IMO Terminal Blocks consist of an insulated material populated with various connection mechanisms that include conventional terminal screw, rising clamp, plug and socket, and screwless types on various pitches and with various electrical capabilities. With our multi-million pound stock holding, at our warehouse facilities, the IMO Terminal Block range gives our customers confidence in our ability to supply a solution to their interconnection problems.

A number of design features have been implemented within the IMO devices to overcome problems typically encountered by our customers when using products of this type, and our continuous investment in tooling for the products, not only allows for production of standard devices, but customer specific designs can also be undertaken and bespoke configurations, including product printing and assembly.

We are confident these new products will offer our customers the technical advantages they need to compete in their own markets. This coupled with highly competitive pricing, high quality and one of the most comprehensive electro-mechanical component packages available, supported by sophisticated IT systems and infrastructure will enable IMO to meet your vendor and administration reduction requirements now and in the future.



IMO ist stolz, eines der umfassendsten Terminal Block-Sortimente vorzustellen, die heute auf dem Markt erhältlich sind. Die IMO Terminal Blocks bestehen aus einem isolierten Material, das mit verschiedensten Verbindungsmechanismen erhältlich ist, darunter konventionelle Terminal-Schrauben, Klemmen (Rising clamp), Stecker und Fassungen sowie schraubenlose Arten mit verschiedenen Winkeln und elektrischen Möglichkeiten. Durch das IMO Terminal Block-Sortiment, das wir in hohen Stückzahlen in unserem Lager vorrätig halten, erhalten unsere Kunden Vertrauen in unsere Fähigkeit, eine Lösung für ihre Verbindungsprobleme zur Verfügung zu stellen.

In die IMO-Produkte wurden eine Reihe von Designmerkmalen implementiert, um Probleme zu überwinden, auf die unsere Kunden typischerweise beim Einsatz von Produkten dieser Art stoßen. Des Weiteren macht unsere kontinuierliche Investition in Produktionsanlagen nicht nur die Fertigung von Standardprodukten, sondern auch kundenspezifische Designs und maßgeschneiderte Konfigurationen einschließlich Produktdruck und -montage möglich.

Wir sind zuversichtlich, dass diese neuen Produkte unseren Kunden die technischen Vorteile geben werden, die sie benötigen, um in ihren eigenen Märkten wettbewerbsfähig zu bleiben. Dies, gekoppelt mit sehr kompetitiven Preisen und einem der umfassendsten elektromechanischen Komponentenpakete, die auf dem Markt erhältlich sind, unterstützt durch ausgereifte IT-Systeme und eine ausgereifte Infrastruktur, ermöglicht es IMO, die Reduktionsanforderungen Ihres Lieferanten und Ihrer Verwaltung heute und in der Zukunft zu erfüllen.



IMO est fier de présenter l'une des gammes de blocs de jonction les plus complètes disponibles sur le marché. Les blocs de jonction IMO se composent d'un matériau isolant doté de divers mécanismes de connexion comprenant entre autres, les blocs de jonction à vis borne classique, à étrier remontant, à fiche et prise, et divers types sans vis à divers pas et pour diverses capacités électriques. Disposant d'un stock d'une valeur de plusieurs millions de livres sterling dans nos entrepôts, la gamme de blocs de jonction IMO mérite la confiance que lui accordent nos clients qui peuvent compter sur notre capacité à apporter une solution à leurs problèmes de connexions.

Les appareils IMO incorporent un certain nombre de caractéristiques conceptuelles visant à résoudre les problèmes habituellement rencontrés par nos clients lorsqu'ils utilisent des produits de ce type, et nos investissements continus dans l'outillage pour la fabrication des produits nous permettent non seulement de produire des appareils standards, mais aussi de réaliser des produits répondant aux spécifications du client, ainsi que des configurations sur mesure, avec notamment le repérage et l'assemblage du produit.

Nous sommes convaincus que ces nouveaux produits vont conférer à nos clients les avantages techniques dont ils ont besoin pour rester compétitifs sur leurs marchés. En conjonction avec des prix très compétitifs, des produits de qualité supérieure et l'une des offres de composants électromécaniques les plus complètes actuellement disponibles, et avec le soutien de systèmes informatiques et d'une infrastructure sophistiqués, cela permet à IMO de répondre dès aujourd'hui et à l'avenir aux demandes de réduction de vos frais de distribution et d'administration.



IMO è orgogliosa di presentare una delle più complete gamme di blocchi di terminali disponibili sul mercato. I blocchi di terminali IMO sono costituiti da un materiale isolante comprendente diversi meccanismi di connessione, tra i quali vite serrafilo tradizionale, morsetto a sollevamento, presa e spina, e anche tipologie senza vite per vari passi e con varie capacità elettriche. Con scorte presso i nostri magazzini per un valore di milioni di sterline, i nostri clienti possono dormire sonni tranquilli perché la gamma di blocchi di terminali IMO troverà sempre una soluzione ai loro problemi di interconnessione.

All'interno dei dispositivi IMO sono state implementate diverse caratteristiche specifiche per risolvere i problemi che spesso incontrano i nostri clienti quando utilizzano prodotti di questo tipo. Inoltre, la nostra politica di investimenti continui nelle attrezzature produttive non solo ci permette di realizzare dispositivi standard, ma anche progetti specifici per il cliente e configurazioni personalizzate, comprese le operazioni di stampa e assemblaggio.

Siamo certi che questi nuovi prodotti garantiranno alla clientela tutti i vantaggi tecnici necessari a competere sui rispettivi mercati. Queste caratteristiche, unite a prezzi altamente competitivi, alta qualità e uno dei pacchetti di componenti elettromeccanici più completi, supportati da infrastrutture e sistemi informatici avanzati, permetteranno a IMO di soddisfare, ora e in futuro, tutte le vostre esigenze di riduzione in termini di amministrazione e fornitura.



IMO tiene el placer de presentar una de las más completas gamas de bloques de terminales disponible en el mercado. Los bloques de terminales IMO están formados por un material aislado relleno con diversos mecanismos de conexión que incluyen tornillo de terminales convencional, abrazadera elevada, enchufe y toma de corriente y tipos sin tornillo de varios pasos y con varias capacidades eléctricas. Con nuestro almacenamiento de existencias valorado en varios millones en nuestras instalaciones de almacenamiento la gama de bloques de terminales IMO brinda a nuestros clientes confianza en nuestra capacidad de suministrar una solución a sus problemas de interconexión.

Se han implementado un cierto número de características de diseño dentro de los dispositivos IMO para superar los problemas con los que se encuentran normalmente nuestros clientes al utilizar productos de este tipo, y nuestra continua inversión en utillaje para los productos no solo permite la producción de dispositivos estándar, si no que pueden realizarse también diseños específicos del cliente, al igual que configuraciones a medida, incluyendo impresión y montaje del producto.

Confiamos en que estos nuevos productos ofrecerán a nuestros clientes las ventajas técnicas que necesitan para competir en sus propios mercados. La combinación de esto con precios altamente competitivos, una gran calidad y uno de los paquetes de componentes electromecánicos más completo disponible en el mercado, todo ello apoyado por infraestructuras y sistemas de TI sofisticados, permitirá a IMO cumplir los requisitos de reducción de gestión y de proveedor ahora y en el futuro.



IMO с гордостью представляет широкий выбор клемм для печатных плат с шагом от 2.5 до 20.32 мм и номинальным напряжением от 150В до 600 В.

Мы поставляем клеммы со следующими методами соединения: штекерные соединители, с винтовым зажимом с элементом для защиты провода, с винтовым зажимом с прижимными элементами, с пружинными зажимами Push-In или Cage Clamp.

Благодаря наличию большинства товара на складе мы гарантируем нашим заказчикам быструю поставку необходимых им клемм IMO.

Разработанные нами решения помогают преодолеть проблемы, с которыми как правило сталкиваются наши клиенты при использовании продукции данного типа. Постоянные инвестиции IMO в разработку новых решений позволяют нам предлагать своим клиентам не только стандартную продукцию, но и производить клеммы по индивидуальному дизайну согласно требованиям клиента.

Мы уверены, что эти новые продукты обеспечат нашим клиентам технические преимущества, которые позволят им быть конкурентоспособными на рынке. Благодаря гибкому ценообразованию, высокому качеству, и широчайшему ассортименту продукции IMO всегда готова выполнить требования своих заказчиков.



- Most Economical IMO PCB Terminal Block Solution
- 3.5mm to 15mm pitches
- Up to 4mm cable entry
- UR/cUR Approved
- Modular and Solid block solutions available
- Printing available on request

Applications:

- Fire and security alarms
- Lighting
- General Electronic Equipment



- Wirtschaftlichste IMO PCB Terminal-Block-Lösung
- Abstand von 3,5 bis 15 mm
- Kabeleintritt bis zu 4 mm
- UR/cUR-zugelassen
- Modulare und Massivblock-Lösungen erhältlich
- Druck auf Anfrage erhältlich.

Einsatzbereiche:

- Feuer- und Sicherheitsalarme
- Beleuchtungssysteme
- Allgemeine elektronische Geräte



- La solution IMO de blocs de jonction à cage à ressort pour circuit imprimé la plus économique
- Pas de 3,5 à 15mm
- Entrée de câble jusqu'à 4mm
- Homologué UR/cUR
- Solutions avec blocs de jonction modulaires ou massifs
- Repérage (impression) sur demande

Applications:

- Alarmes incendie et sécurité
- Éclairage
- Équipement électronique général



- Soluzione blocchi terminali PCB IMO più economica
- Passi da 3,5mm a 15mm
- Ingresso cavo fino a 4mm
- Omologazione UR/cUR
- Soluzioni blocchi completi e modulari disponibili
- Stampa possibile su richiesta

Applicazioni:

- Allarmi antincendio e sicurezza
- Illuminazione
- Apparecchiature elettroniche in generale



- La solución de bloque de terminales PCB de IMO más económica.
- Pasos de 3,5 mm a 15 mm
- Entrada de cable de hasta 4 mm
- Homologación UR/cUR
- Disponibles soluciones de bloques modulares y sólidos
- Impresión disponible a petición

Aplicaciones:

- Alarmas de incendio y de seguridad
- Iluminación
- Equipos electrónicos generales



- Наиболее практичные и экономически выгодные клеммы от IMO
- Шаг от 3,5 мм до 15 мм
- Входное отверстие для кабеля с сечением от 0,5мм до 4мм
- UR/cUR сертификация
- Клеммы доступны как в модульном, так и в цельном корпусе
- Возможность печати на клеммах по предварительному заказу

Сфера применения:

- Сигнальные системы пожарной безопасности и охраны
- Освещение
- Электрическое оборудование общего назначения

Standard Type PCB Terminal Blocks

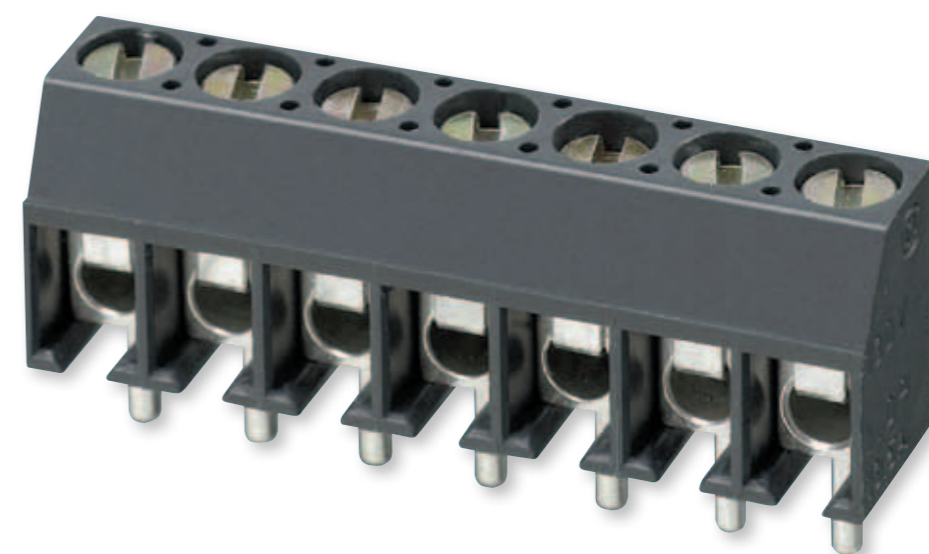
Käfigzugklemme Typ PCB Terminal Blocks

Blocs de jonction à cage à ressort pour circuit imprimé

Blocchi terminali PCB morsetto a gabbia

Bloques de terminales PCB tipo cage clamp

Стандартные клеммы для печатных плат





| | 20.550M | 21.550M | 20.555M | 21.555M | 20.510M | 20.514M | 20.500M | 21.500M | 20.505M | 21.505M | 20.590M | |
|-------------------|---------------------------------|---------|---------------------------------|---------|-------------------------------------|---------|-------------------------------------|---------|---------------------------------|---------|---------------------------------------|------|
| | | | | | | | | | | | | |
| | | | | | | | | | | | | |
| Pitch | 3.5mm (3.81mm) | | 3.5mm (3.81mm) | | 3.50mm | 3.50mm | 5.00mm (5.08mm) | | 5.00mm (5.08mm) | | 5.00mm | |
| Technical Data | UL | IEC | UL | IEC | UL | IEC | UL | IEC | UL | IEC | UL | IEC |
| Rated voltage | 300V | | 300V | | 300V | 130V | 300V | 130V | 300V | 130V | 300V | 250V |
| Rated current | 6A | | 6A | | 10A | 10A | 10A | 10A | 16A | 16A | 8A | 10A |
| Wire size | 1.5 mm ² / 24-16 AWG | | 1.5 mm ² / 24-16 AWG | | 0.5-1.5 mm ² / 24-16 AWG | | 0.5-1.5 mm ² / 24-16 AWG | | 2.5 mm ² / 20-14 AWG | | 0.5-1.5 mm ² / 26 - 14 AWG | |
| Available options | | | | | | | | | | | | |
| Screw | M2 | | M2 | | M2 | M2 | M2.5 | | M2.5 | | M2.5 | |
| Available poles | 2 - 24 | | 2 - 24 | | 2 - 24 | 2 - 24 | 2 - 24 | | 2 - 24 | | 2 - 24 | |



| | 20.100M | 21.100M | 20.105M | 21.105M | 20.300M | 20.130M | 20.130M/PS | 20.102M | 20.103M | | | |
|-------------------|---------------------------------|---------|---------------------------------|---------|---------------------------------|---------|---------------------------------|---------|-------------------------------------|--------|-------------------------------------|--|
| | | | | | | | | | | | | |
| | | | | | | | | | | | | |
| Pitch | 5.00mm (5.08mm) | | 5.00mm (5.08mm) | | 5.00mm | 5.00mm | 5.00mm | 5.00mm | 7.50mm | | | |
| Technical Data | UL | IEC | UL | IEC | UL | IEC | UL | IEC | UL | IEC | | |
| Rated voltage | 300V | 250V | 300V | 250V | 250V | 130V | 300V | 250V | 300V | 450V | | |
| Rated current | 16A | 24A | 16A | 24A | 16A | 16A | 10A | 10A | 12A | 24A | | |
| Wire size | 2.5 mm ² / 22-14 AWG | | 2.5 mm ² / 22-14 AWG | | 2.5 mm ² / 26-12 AWG | | 1.5 mm ² / 20-14 AWG | | 0.5-2.5 mm ² / 18-12 AWG | | 0.5-2.5 mm ² / 18-12 AWG | |
| Available options | | | | | | | | | | | | |
| Screw | M3 | | M3 | | M2.5 | M2.5 | M3 | | | M3 | | |
| Available poles | 2 - 24 | | 2 - 24 | | 2 - 24 | 2 - 24 | 24 | 2 - 30 | | 2 - 12 | | |



| | 20.110M | 20.112M | 20.113M | 20.600M | 21.600M | 20.605M | 21.605M | 20.200M | 21.200M | 20.205M | 21.205M |
|-------------------|-------------------------------------|-----------------------------------|-----------------------------------|---------------------------------|---------------------------------|---------------------------------|---------------------------------|---------------------------------|---------------------------------|---------------------------------|---------------------------------|
| | | | | | | | | | | | |
| | | | | | | | | | | | |
| Pitch | 7.50mm | 7.50mm | 7.50mm | 10.00mm (10.16mm) | 10.00mm (10.16mm) | 10.00mm (10.16mm) | 10.00mm (10.16mm) | 10.00mm (10.16mm) | 10.00mm (10.16mm) | 10.00mm (10.16mm) | 10.00mm (10.16mm) |
| Technical Data | UL IEC | UL IEC | UL IEC | UL IEC | UL IEC | UL IEC | UL IEC | UL IEC | UL IEC | UL IEC | UL IEC |
| Rated voltage | 300V 450V | 250V 250V | 250V 250V | 300V 250V | 300V 250V | 300V 130V | 300V 250V | 300V 250V | 300V 250V | 300V 250V | 300V 250V |
| Rated current | 16A 24A | 16A 24A | 16A 24A | 16A 16A | 16A 16A | 16A 16A | 16A 24A | 16A 24A | 16A 24A | 16A 24A | 16A 24A |
| Wire size | 0.5-2.5 mm ² / 22-14 AWG | 2.5 mm ² / 22 - 14 AWG | 2.5 mm ² / 22 - 14 AWG | 2.5 mm ² / 20-14 AWG | 2.5 mm ² / 20-14 AWG | 2.5 mm ² / 20-14 AWG | 2.5 mm ² / 22-14 AWG | 2.5 mm ² / 22-14 AWG | 2.5 mm ² / 22-14 AWG | 2.5 mm ² / 22-14 AWG | 2.5 mm ² / 22-14 AWG |
| Available options | | | | | | | | | | | |
| Screw | M3 | M3 | M3 | M2.5 | M2.5 | M2.5 | M3 | M3 | M3 | M3 | M3 |
| Available poles | 2 - 24 | 2 - 24 | 2 - 24 | 2 - 24 | 2 - 24 | 2 - 24 | 2 - 24 | 2 - 24 | 2 - 24 | 2 - 24 | 2 - 24 |



| | 20.400M | 20.104M | 20.230M | 20.230M/PS | 20.210M | 20.212M | 20.213M |
|-------------------|---------------------------------|-------------------------------------|---------------------------------|------------|---------------------------------|-----------------------------------|-----------------------------------|
| | | | | | | | |
| | | | | | | | |
| Pitch | 10.00mm | 10.00mm | 10.00mm | 10.00mm | 15.00mm | 15.00mm | 15.00mm |
| Technical Data | UL IEC | UL IEC | UL IEC | UL IEC | UL IEC | UL IEC | UL IEC |
| Rated voltage | 250V 130V | 300V/600V 450V | 300V | 300V 250V | 300V 450V | 250V 250V | 250V 250V |
| Rated current | 16A 16A | 12A/5A 24A | 10A | 7A 10A | 16A 24A | 16A 24A | 16AV 24A |
| Wire size | 2.5 mm ² / 26-12 AWG | 0.5-2.5 mm ² / 18-12 AWG | 1.5 mm ² / 20-14 AWG | | 2.5 mm ² / 22-14 AWG | 2.5 mm ² / 22 - 14 AWG | 2.5 mm ² / 22 - 14 AWG |
| Available options | | | | | | | |
| Screw | M2.5 | M3 | M2.5 | | M3 | M3 | M3 |
| Available poles | 2 - 24 | 2 - 12 | 2 - 24 | 12 | 2 - 24 | 2 - 24 | 2 - 24 |



- Wide variety of Rising Clamp PCB Terminals
- UR/cUR approved
- Pitch sizes – from 2.54mm up to 20.32mm
- Rated voltage : 150-1000 V, Rated current : 5-125A
- Selection of single-, two- or three- level designs
- Customized printing available
- Alternative colours available

Key Applications:

- Power Supply
- Solar Inverter
- Industrial Control
- Fire and Security
- Lighting
- Instrumentation



- Abstand von 2.5 bis 20.32 mm
- Bemessung bis zu 125A/1000V
- Kabeleintritt bis zu 35 mm
- UR/cUR-zugelassen
- Modulares Design
- Hohe elektrische Kapazität, geringer Platzbedarf
- Ein-, zwei- und dreistufige Designs
- Maßgeschneiderte Designs erhältlich
- Druck verfügbar
- Alternative Farben erhältlich

Schlüsseinsatzbereiche:

- Stromversorgung
- Solarinverter
- Industrielle Kontrolle
- Feuer und Sicherheit
- Beleuchtungssysteme
- Instrumente



- Pas de 2.5 à 20.32 mm
- Valeurs nominales jusqu'à 125A/1000V
- Entrée de câble jusqu'à 35 mm
- Homologué UR/cUR
- Conception modulaire
- Haute capacité électrique, encombrement réduit
- Modèles à un, deux ou trois niveaux
- Modèles sur mesure disponibles
- Repérage disponible
- Autres couleurs disponibles

Principales applications:

- Alimentation électrique
- Onduleurs solaires
- Contrôle industriel
- Incendie et sécurité
- Éclairage
- Instrumentation



- Passi da 2.5 mm a 20.32 mm
- Dati di targa fino a 125A/1000V
- Ingresso cavo fino a 35mm
- Omologazione UR/cUR
- Modularità
- Notevole capacità elettrica, poco spazio
- Uno, due e tre livelli
- Personalizzazioni possibili
- Stampa possibile
- Colori alternativi disponibili

Applicazioni principali:

- Alimentazione
- Inverter solare
- Controllo industriale
- Antincendio e sicurezza
- Illuminazione
- Strumentazione



- Pasos de 2.5 mm a 20.32 mm
- Valores nominales hasta 125A/1000V
- Entrada de cable de hasta 35mm
- Homologación UR/cUR
- Diseño modular
- Elevada capacidad eléctrica, pequeño espacio
- Diseños de un, dos y tres niveles
- Diseños personalizados disponibles
- Impresión disponible
- Colores alternativos disponibles

Aplicaciones clave:

- Alimentación de energía
- Inversor fotovoltaico
- Control industrial
- Incendios y seguridad
- Iluminación
- Instrumentación



- Широкий ассортимент клемм Rising Clamp включает в себя миниатюрные клеммы размером от 2,54 мм до силовых клемм размером 20,32 мм.
- UR/cUR сертификация
- Номинальное напряжение : 150-1000 В, Номинальный ток: 5 - 125 А
- Одно-, двух- и трех- уровневые решения
- Клеммы могут маркироваться по желанию заказчика
- Индивидуальный дизайн продукции согласно требованиям клиента

Ключевые сферы применения:

- Электропитание.
- Солнечный инвертор.
- Промышленный контроль.
- Системы пожарной безопасности и охраны.
- Освещение.
- Контрольно-измерительные приборы.

Rising Clamp PCB Terminal Blocks

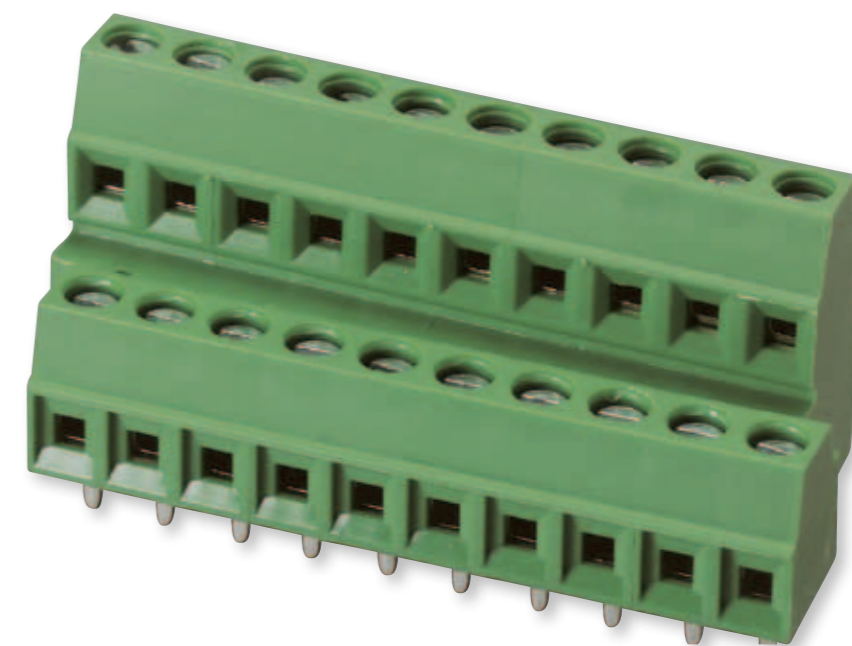
Klemmleisten mit steigender Klammer

Blocs de jonction à étrier remontant pour circuit imprimé

Blocchi terminali PCB morsetto a sollevamento

Bloques de terminales PCB de abrazadera elevada

Клеммы для печатных плат - Rising Clamp





| | 21.551M | 20.552M | 21.559M | 20.558M | 21.558M | 21.556M | 21.557M |
|-------------------|--------------------------------------|---------------------------------------|--------------------------------------|--------------------------------------|--------------------------------------|--------------------------------------|--------------------------------------|
| | | | | | | | |
| | | | | | | | |
| Pitch | 2.54mm | 3.50mm | 3.81mm | 3.50mm | 3.81mm | 3.81mm | 3.81mm |
| Technical Data | UL IEC | UL IEC | UL IEC | UL IEC | UL IEC | UL IEC | UL IEC |
| Rated voltage | 150V 130V | 300V 130V | 300V 250V | 300V 130V | 300V 250V | 300V 130V | 300V 250V |
| Rated current | 10A 8A | 10A 12A | 12A 12A | 10A 12A | 12A 12A | 10A 8A | 12A 12A |
| Wire size | 0.5-1.5 mm ² / 28 -16 AWG | 0.14-1.5 mm ² / 30 -16 AWG | 0.5-1.5 mm ² / 30 -16 AWG | 0.14-1.5 mm ² / 30-16 AWG | 0.5-1.5 mm ² / 30 -16 AWG | 0.5-1.5 mm ² / 26 -16 AWG | 0.5-1.5 mm ² / 30 -16 AWG |
| Available options | | | | 300V/15A 250V/15A | 300V/15A 250V/15A | | 300V/15A 250V/15A |
| Screw | M1.6 | M2 | M2 | M2 | M2 | M2 | M2 |
| Available poles | 2 - 16 | 2 - 24 | 2 - 24 | 2 - 24 | 2 - 24 | 2 - 16 | 2 - 24 |



| | 20.553M | 21.553M | 21.554M | 21.560M | 20.251M | 21.251M | 20.351M | 21.351M | 20.354M |
|-------------------|--------------------------------------|--------------------------------------|--------------------------------------|--------------------------------------|---------------------------------------|--|--|---------------------------------------|---------------------------------------|
| | | | | | | | | | |
| | | | | | | | | | |
| Pitch | 3.50mm | 3.81mm | 3.81mm | 3.81mm | 5.00mm (5.08mm) | 5.00mm (5.08mm) | 5.00mm (5.08mm) | 5.00mm | 5.00mm |
| Technical Data | UL IEC | UL IEC | UL IEC | UL IEC | UL IEC | UL IEC | UL IEC | UL IEC | UL IEC |
| Rated voltage | 300V 130V | 300V 250V | 300V 250V | 300V 250V | 300V 250V | 300V 250V | 300V 250V | 300V 250V | 300V 250V |
| Rated current | 10A 10A | 12A 12A | 12A 12A | 12A 12A | 13.5A 17.5A | 20A 24A | 20A 24A | 20A 12A | 20A 12A |
| Wire size | 0.5-1.5 mm ² / 30 -16 AWG | 0.5-1.5 mm ² / 30 -16 AWG | 0.5-1.5 mm ² / 30 -16 AWG | 0.5-1.5 mm ² / 30 -16 AWG | 0.14-1.5 mm ² / 30 -16 AWG | 0.14-1.5 mm ² / 24 - 12 AWG | 0.14-1.5 mm ² / 24 - 12 AWG | 0.5-2.5 mm ² / 24 - 12 AWG | 0.5-2.5 mm ² / 24 - 12 AWG |
| Available options | 300V/15A 250V/15A | 300V/15A 250V/15A | 300V/15A 250V/15A | 300V/15A 250V/15A | 300V/15A 250V/24A | 300V/10A 250V/24A | 300V/10A 250V/24A | | |
| Screw | M2 | M2 | M2 | M2 | M2.5 | M2.5 | M2.5 | M2.5 | M2.5 |
| Available poles | 2 x (2 - 20) | 2 x (2 - 24) | 2 x (2 - 24) | 3 x (2 - 24) | 2 - 24 | 2 - 24 | 2 - 24 | 2 - 16 | 2 - 16 |



| | 20.250M | 21.250M | 21.252M | 20.350M | 21.350M | 20.355M | 21.355M | 20.700M | 21.700M | 20.705M | 21.705M | 21.756M |
|-------------------|---------------------------------------|----------|--------------------------------------|-----------------|---------------------------------------|-----------------|---------------------------------------|-----------------|---------------------------------------|-----------------|---------------------------------------|----------|
| | | | | | | | | | | | | |
| | | | | | | | | | | | | |
| Pitch | 5.00mm (5.08mm) | | 5.08mm | 5.00mm (5.08mm) | | 5.00mm (5.08mm) | | 5.00mm (5.08mm) | | 5.00mm (5.08mm) | | 5.08mm |
| Technical Data | UL | IEC | UL | IEC | UL | IEC | UL | IEC | UL | IEC | UL | IEC |
| Rated voltage | 300V | 250V | 300V | 250V | 300V | 250V | 300V | 250V | 300V | 450V | 300V | 250V |
| Rated current | 13.5A | 14A | 13.5A | 14A | 20A | 24A | 20A | 10A | 25A | 24A | 25A | 24A |
| Wire range | 0.14-1.5 mm ² / 30 -16 AWG | | 0.5-1.5 mm ² / 26 -18 AWG | | 0.5-2.5 mm ² / 24 - 12 AWG | | 0.5-2.5 mm ² / 24 - 12 AWG | | 0.5-2.5 mm ² / 24 - 12 AWG | | 0.5-2.5 mm ² / 24 - 12 AWG | |
| Available options | 300V/8A | 250V/15A | 300V/15A | 250V/18A | 300V/15A | 250V/18A | | | 300V/16A | 250V/25A | 300V/16A | 250V/25A |
| Screw | M2.5 | | M3 | | M2.5 | | M2.5 | | M2.5 | | M2.5 | |
| Available poles | 2 - 24 (2 - 17) | | 2 x (2 - 16) | | 2 - 25 | | 2 - 25 | | 2 - 24 | | 2 - 24 | |



| | 20.352M | 21.352M | 20.353M | 21.353M | 20.783M | 21.783M | 20.793M | 21.793M | 20.751M | 21.751M | 20.752M | 21.752M | 20.753M | 21.753M |
|-------------------|---------------------------------------|----------|---------------------------------------|----------|---------------------------------------|----------|---------------------------------------|---------|---------------------------------------|---------|---------------------------------------|---------|---------------------------------------|---------|
| | | | | | | | | | | | | | | |
| | | | | | | | | | | | | | | |
| Pitch | 5.00mm (5.08mm) | | 5.00mm (5.08mm) | | 5.00mm (5.08mm) | | 5.00mm (5.08mm) | | 5.00mm (5.08mm) | | 5.00mm (5.08mm) | | 5.00mm (5.08mm) | |
| Technical Data | UL | IEC | UL | IEC | UL | IEC | UL | IEC | UL | IEC | UL | IEC | UL | IEC |
| Rated voltage | 300V | 250V | 300V | 250V | 300V | 250V | 300V | 250V | 300V | 250V | 300V | 250V | 300V | 250V |
| Rated current | 20A | 10A | 20A | 10A | 20A | 12A | 20A | 10A | 20A | 10A | 20A | 10A | 20A | 10A |
| Wire range | 0.5-2.5 mm ² / 24 - 12 AWG | | 0.5-2.5 mm ² / 24 - 12 AWG | | 0.5-2.5 mm ² / 24 - 12 AWG | | 0.5-2.5 mm ² / 24 - 12 AWG | | 0.5-2.5 mm ² / 24 - 12 AWG | | 0.5-2.5 mm ² / 24 - 12 AWG | | 0.5-2.5 mm ² / 24 - 12 AWG | |
| Available options | 300V/15A | 250V/18A | 300V/15A | 250V/18A | 300V/15A | 250V/18A | | | | | | | | |
| Screw | M2.5 | | M2.5 | | M2.5 | | M2.5 | | M2.5 | | M2.5 | | M2.5 | |
| Available poles | 2 x (2 - 24) | | 2 x (2 - 24) | | 2 - 24 | | 2 - 24 | | 2 x (2 - 24) | | 2 x (2 - 24) | | 3 x (2 - 24) | |



| | 21.750M | 21.754M | 21.755M | 21.840M | 21.850M | 21.844M | 21.845M |
|-------------------|---------------------------------------|---------------------------------------|---------------------------------------|-------------------------------------|-----------------------------------|----------------------------------|----------------------------------|
| | | | | | | | |
| | | | | | | | |
| Pitch | 5.08mm | 5.08mm | 5.08mm | 6.35mm | 6.35mm | 6.35mm | 6.35mm |
| Technical Data | UL IEC | UL IEC | UL IEC | UL IEC | UL IEC | UL IEC | UL IEC |
| Rated voltage | 300V 250V | 300V 250V | 300V 250V | 300V 250V | 300V 450V | 600V 1000V | 600V 1000V |
| Rated current | 25A 32A | 25A 24A | 25A 24A | 30A 32A | 30A 32A | 35A 41A | 35A 41A |
| Wire range | 0.5-2.5 mm ² / 24 - 12 AWG | 0.5-2.5 mm ² / 24 - 12 AWG | 0.5-2.5 mm ² / 24 - 12 AWG | 0.5-4 mm ² / 26 - 10 AWG | 0.5-4 mm ² / 30-10 AWG | 0.2-6 mm ² / 18-8 AWG | 0.2-6 mm ² / 18-8 AWG |
| Available options | | | | 300V/30A 250V/35A | | | |
| Screw | M2.5 | M2.5 | M2.5 | M3 | M3 | M3 | M3 |
| Available poles | 2 x (2 - 24) | 2 x (2 - 24) | 3 x (2 - 24) | 2 - 12 | 2 x (2 - 24) | 2 - 16 | 2 - 16 |



| | 20.356M | 20.357M | 20.710M 21.710M | 20.841M 21.841M | 21.851M | 21.844M-1 | 21.845M-1 |
|-------------------|---------------------------------------|---------------------------------------|---------------------------------------|-------------------------------------|-----------------------------------|----------------------------------|----------------------------------|
| | | | | | | | |
| | | | | | | | |
| Pitch | 7.5mm | 7.5mm | 7.50mm (7.62mm) | 7.50mm (7.62mm) | 7.62mm | 8.25mm | 8.25mm |
| Technical Data | UL IEC | UL IEC | UL IEC | UL IEC | UL IEC | UL IEC | UL IEC |
| Rated voltage | 300V 250V | 600V / 300V 250V | 300V 750V | 300V/600V 450V | 300V / 600V 750V | 600V 1000V | 600V 1000V |
| Rated current | 10A 18A | 10A 18A | 25A 24A | 30A/5A 32A | 30A / 5A 32A | 35A 41A | 35A 41A |
| Wire range | 0.5-2.5 mm ² / 22 - 12 AWG | 0.5-2.5 mm ² / 22 - 12 AWG | 0.5-2.5 mm ² / 24 - 12 AWG | 0.5-4 mm ² / 24 - 10 AWG | 0.5-4 mm ² / 24-10 AWG | 0.2-6 mm ² / 18-8 AWG | 0.2-6 mm ² / 18-8 AWG |
| Available options | | | 300V/16A 250V/25A | | | | |
| Screw | M2.5 | M2.5 | M2.5 | M3.5 | M3.5 | M3 | M3 |
| Available poles | 2 - 24 | 2 - 24 | 2 - 24 | 2 - 12 | 2 x (2 - 24) | 2 - 16 | 2 - 16 |



| | 20.842M | 21.843M | 21.844M-2 | 21.845M-2 | 21.847M | 21.848M | 21.847M-1 |
|-------------------|-------------------------------------|-------------------------------------|----------------------------------|----------------------------------|-----------------------------------|-----------------------------------|-----------------------------------|
| | | | | | | | |
| | | | | | | | |
| Pitch | 9.52mm | 10.16mm | 10.16mm | 10.16mm | 10.16mm | 10.16mm | 12.7mm |
| Technical Data | UL IEC | UL IEC | UL IEC | UL IEC | UL IEC | UL IEC | UL IEC |
| Rated voltage | 300V / 600V 1000V | 300V / 600V 1000V | 600V 1000V | 600V 1000V | 600V 1000V | 600V 1000V | 600V 1000V |
| Rated current | 30A / 5A 32A | 65A / 5A 57A | 35A 41A | 35A 41A | 57A / 65A 76A | 57A / 65A 76A | 65A 76A |
| Wire range | 0.5-4 mm ² / 26 - 10 AWG | 0.5-10 mm ² / 20 - 6 AWG | 0.2-6 mm ² / 18-8 AWG | 0.2-6 mm ² / 18-8 AWG | 0.5-16 mm ² / 20-6 AWG | 0.5-16 mm ² / 20-6 AWG | 0.5-16 mm ² / 20-6 AWG |
| Available options | | | | | | | |
| Screw | M3 | M4 | M3 | M3 | M4 | M4 | M4 |
| Available poles | 2 - 12 | 2 - 12 | 2 - 16 | 2 - 16 | 2 - 16 | 2 - 16 | 2 - 16 |



| | 21.848M-1 | 20.849M | 20.849MF | 21.860M | 21.847M-2 | 21.848M-2 | 21.843M-1 |
|-------------------|-----------------------------------|-----------------------------------|-----------------------------------|-----------------------------------|-----------------------------------|-----------------------------------|-----------------------------------|
| | | | | | | | |
| | | | | | | | |
| Pitch | 12.7mm | 15.00mm | 15.00mm | 15.24mm | 15.24mm | 15.24mm | 20.32mm |
| Technical Data | UL IEC | UL IEC | UL IEC | UL IEC | UL IEC | UL IEC | UL IEC |
| Rated voltage | 600V 1000V | 600V 1000V | 600V 1000V | 600V 1000V | 600V 1000V | 600V 1000V | 1000V 1000V |
| Rated current | 65A 76A | 115A 125A | 115A 125A | 65A 57A | 65A 76A | 65A 76A | 65A 57A |
| Wire range | 0.5-16 mm ² / 20-6 AWG | 0.5-35 mm ² / 20-2 AWG | 0.5-35 mm ² / 20-2 AWG | 0.5-10 mm ² / 20-6 AWG | 0.5-16 mm ² / 20-6 AWG | 0.5-16 mm ² / 20-6 AWG | 0.5-10 mm ² / 20-6 AWG |
| Available options | | | | | | | |
| Screw | M4 | M5 | M5 | M4 | M4 | M4 | M4 |
| Available poles | 2 - 16 | 2 - 9 | 2 - 7 | 2-24 | 2 - 16 | 2 - 16 | 2 - 8 |



- Wide variety of headers for pluggable terminal blocks
- UR/cUR approved
- Pitch sizes – from 2.5mm up to 10.16mm
- Rated voltage : 150-600 V, Rated current : 4-65A
- Selection of single-row or double-row headers
- Available with horizontal, vertical or angled conductor entry
- Headers are supplied open-ended, closed or with a flange
- High temperature versions available for Reflow solder process
- Customized printing available
- Big range of accessories

Key Applications:

- Power Supply
- Solar Inverter
- Industrial Control
- Fire and Security
- Lighting
- Instrumentation



- Soluzione interconnessione a spina professionale IMO
- Passi da 2,5mm a 10,16mm
- Basetta chiusa o aperta
- Connessione polarizzata
- Dati di targa fino a 65A/600V
- Omologazione UL/CUL
- Prodotti selezionati con omologazione VDE
- Uno e due livelli
- Personalizzazioni possibili
- Stampa possibile
- Colori alternativi disponibili
- Versioni alte temperature possibili per saldatura a rifusione

Applicazioni principali:

- Alimentazione
- Inverter solare
- Controllo industriale
- Antincendio e sicurezza
- Illuminazione
- Strumentazione



- Professionelle einsteckbare Verbindungslösung von IMO
- Abstände von 2,5 bis 10,16 mm
- Geschlossenes oder offenes Kopfteil
- Polariserte Verbindung
- Bemessung bis zu 65 A/600 V
- UL/CUL-zugelassen
- Ausgewählte Produkte mit VDE-Zulassung
- Ein- und zweistufige Designs
- Maßgeschneiderte Designs erhältlich
- Druck verfügbar
- Alternative Farben erhältlich
- Hochtemperatur-Versionen für Rückflussmethoden erhältlich

Schlüsseleinsatzbereiche:

- Stromversorgung
- Solarinverter
- Industrielle Kontrolle
- Feuer und Sicherheit
- Beleuchtungssysteme
- Instrumente



- Solución de interconexión enchufable profesional de IMO
- Pasos de 2,5mm a 10,16mm
- Cabezal cerrado u abierto
- Conexión polarizada
- Valores nominales hasta 65A/600 V
- Homologación UL/CUL
- Productos seleccionados con homologación VDE
- Diseños de uno y dos niveles
- Diseños personalizados disponibles
- Impresión disponible
- Colores alternativos disponibles
- Versiones de alta temperatura disponibles para soldadura de reflujo

Aplicaciones clave:

- Alimentación de energía
- Inversor fotovoltaico
- Control industrial
- Incendios y seguridad
- Iluminación
- Instrumentación



- La solution IMO d'interconnexion enfichable pour les professionnels
- Pas de 2,5 à 10,16mm
- Embase fermée ou ouverte
- Connexion polarisée
- Valeurs nominales jusqu'à 65 A/600 V
- Homologué UL/CUL
- Produits sélectionnés avec homologation VDE
- Modèles à un ou à deux niveaux
- Modèles sur mesure disponibles
- Repérage disponible
- Autres couleurs disponibles
- Versions haute température disponibles pour soudure en refusion

Principales applications:

- Alimentation électrique
- Onduleurs solaires
- Contrôle industriel
- Incendie et sécurité
- Éclairage
- Instrumentation



- Широкий ассортимент соединительных разъемов для печатных плат
- UR/cUR сертификация
- Шаг от 2.5 мм до 10.16 мм
- Номинальное напряжение : 150-600 В, Номинальный ток : 4-65 А
- Однорядный или двухъярусный дизайн корпуса
- Доступны со следующими направлениями подключения: параллельно, перпендикулярно или под углом 45° к печатной плате
- Разъемы поставляются в открытом, закрытом исполнении или закрытом исполнении с фланцем
- Термостойкий пластик разъемов HT серии позволяет использовать их в процессе пайки методом Reflow
- Разъемы могут маркироваться по желанию заказчика
- Полный ассортимент аксессуаров

Ключевые сферы применения:

- Электропитание
- Солнечный инвертор
- Промышленный контроль
- Системы пожарной безопасности и охраны
- Освещение.
- Контрольно-измерительные приборы

Pluggable Terminal Blocks - Headers

(Kopfteile) Fassungen für einsteckbare Terminal-Block

Embases (douilles) pour blocs de jonction enfichables

Basette (prese) per blocchi terminali a spina

Cabezales (tomas) para bloques de terminales enchufables

Разъемы для печатных плат - розеточная часть





| | 20.2500MV | 20.2500MH | 20.2501MV | 20.2501MH | 20.155MV | 21.155MV | 20.155MVF | 21.155MVF | 20.155MH | 21.155MH |
|-------------------|-----------|-----------|-----------|-----------|------------|----------|-----------------|-----------|-----------------|----------|
| Pitch | 2.50mm | | 2.50mm | | 2.50mm | | 3.50mm (3.81mm) | | 3.50mm (3.81mm) | |
| Technical Data | UL | IEC | UL | IEC | UL | IEC | UL | IEC | UL | IEC |
| Rated voltage | 150V | 130V | 150V | 130V | 150V | 250V | 150V | 250V | 300V | 320V |
| Rated current | 4A | 4A | 4A | 4A | 4A | 5A | 4A | 5A | 8A | 14A |
| Wire range | | | | | | | | | | |
| Available options | 150V/5A | 250V/6A | 150V/5A | 250V/6A | | | 300V/8A | 250V/10A | 300V/8A | 250V/10A |
| Screw | | | | | | | | | | |
| Available poles | 2 - 24 | | 2 - 24 | | 2 x (2-24) | | 2 - 24 | | 2 - 24 | |



| | 20.155MHF | 21.155MHF | 21.155MA | 21.155MAF | 20.156MV | 21.156MV | 20.156MVF | 21.156MVF | 20.156MH | 21.156MH | 20.156MHF | 21.156MHF |
|-------------------|-----------------|-----------|----------|-----------|-----------------|----------|-----------------|-----------|-----------------|----------|-----------------|-----------|
| Pitch | 3.50mm (3.81mm) | | 3.81mm | | 3.50mm (3.81mm) | | 3.50mm (3.81mm) | | 3.50mm (3.81mm) | | 3.50mm (3.81mm) | |
| Technical Data | UL | IEC | UL | IEC | UL | IEC | UL | IEC | UL | IEC | UL | IEC |
| Rated voltage | 300V | 320V | 300V | 320V | 300V | 320V | 300V | 320V | 300V | 320V | 300V | 320V |
| Rated current | 8A | 14A | 8A | 14A | 8A | 14A | 8A | 14A | 8A | 14A | 8A | 14A |
| Wire range | | | | | | | | | | | | |
| Available options | 300V/8A | 250V/10A | | | 300V/8A | 250V/10A | 300V/8A | 250V/10A | 300V/8A | 250V/10A | 300V/8A | 250V/10A |
| Screw | | | | | | | | | | | | |
| Available poles | 2 - 24 | | 2 - 24 | | 2 x (2 - 18) | | 2 x (2 - 16) | | 2 x (2 - 22) | | 2 x (2 - 18) | |



| | 20.157MV | 21.157MV | 20.157MVF | 21.157MVF | 20.157MH | 21.157MH | 20.157MHF | 21.157MHF | 21.158MP | 21.95MVL | 21.95MVL F | |
|-------------------|-----------------|----------|-----------------|-----------|-----------------|----------|-----------------|-----------|----------|----------|------------|------|
| | | | | | | | | | | | | |
| | | | | | | | | | | | | |
| Pitch | 3.50mm (3.81mm) | | 3.50mm (3.81mm) | | 3.50mm (3.81mm) | | 3.50mm (3.81mm) | | 3.81mm | 5.08mm | | |
| Technical Data | UL | IEC | UL | IEC | UL | IEC | UL | IEC | UL | IEC | UL | IEC |
| Rated voltage | 300V | 320V | 300V | 320V | 300V | 320V | 300V | 320V | 300V | 320V | 300V | 600V |
| Rated current | 8A | 14A | 8A | 14A | 8A | 14A | 8A | 14A | 8A | 14A | 12A | 14A |
| Wire range | | | | | | | | | | | | |
| Available options | 300V/8A | 250V/10A | 300V/8A | 250V/10A | 300V/8A | 250V/10A | 300V/8A | 250V/10A | | | | |
| Screw | | | | | | | | | | | | |
| Available poles | 2 x (2 - 18) | | 2 x (2 - 16) | | 2 x (2 - 18) | | 2 x (2 - 16) | | 2 - 24 | 2 - 24 | | |



| | 21.95MHL | 21.95MHL F | 20.95MV | 21.95MV | 20.90MV | 21.90MV | 20.95MVF | 21.95MVF | 20.95MH | 21.95MH | 20.90MH | 21.90MH |
|-------------------|----------|------------|---------|---------|-----------------|----------|-----------------|----------|-----------------|----------|-----------------|----------|
| | | | | | | | | | | | | |
| | | | | | | | | | | | | |
| Pitch | 5.08mm | | 5.08mm | | 5.00mm (5.08mm) | | 5.00mm (5.08mm) | | 5.00mm (5.08mm) | | 5.00mm (5.08mm) | |
| Technical Data | UL | IEC | UL | IEC | UL | IEC | UL | IEC | UL | IEC | UL | IEC |
| Rated voltage | 300V | 600V | 300V | 600V | 300V | 600V | 300V | 600V | 300V | 600V | 300V | 600V |
| Rated current | 12A | 14A | 12A | 14A | 15A | 18A | 15A | 18A | 15A | 18A | 15A | 18A |
| Wire range | | | | | | | | | | | | |
| Available options | | | | | 300V/15A | 320V/20A | 300V/15A | 320V/20A | 300V/15A | 320V/20A | 300V/15A | 320V/20A |
| Screw | | | | | | | | | | | | |
| Available poles | 2 - 24 | | 2 - 24 | | 2 - 24 | | 2 - 24 | | 2 - 24 | | 2 - 24 | |



| | 20.95MHF | 21.95MHF | 20.93MV | 21.93MV | 20.93MVF | 21.93MVF | 20.94MVC | 21.94MVC | 20.94MV | 21.94MV | 20.94MVF | 21.94MVF | 20.93MH | 21.93MH |
|-----------------|-----------------|----------|-----------------|----------|-----------------|----------|-----------------|----------|-----------------|----------|-----------------|----------|-----------------|----------|
| | | | | | | | | | | | | | | |
| | | | | | | | | | | | | | | |
| Pitch | 5.00mm (5.08mm) | | 5.00mm (5.08mm) | | 5.00mm (5.08mm) | | 5.00mm (5.08mm) | | 5.00mm (5.08mm) | | 5.00mm (5.08mm) | | 5.00mm (5.08mm) | |
| Technical Data | UL | IEC | UL | IEC | UL | IEC | UL | IEC | UL | IEC | UL | IEC | UL | IEC |
| Rated voltage | 300V | 600V | 300V | 600V | 300V | 600V | 300V | 600V | 300V | 600V | 300V | 600V | 300V | 600V |
| Rated current | 15A | 18A | 15A | 18A | 15A | 18A | 15A | 18A | 15A | 18A | 15A | 18A | 15A | 18A |
| Wire range | | | | | | | | | | | | | | |
| Avai2 x (2-24) | 300V/15A | 320V/20A | 300V/15A | 320V/20A | 300V/15A | 320V/20A | 300V/15A | 320V/20A | 300V/15A | 320V/20A | 300V/15A | 320V/20A | 300V/15A | 320V/20A |
| Screw | | | | | | | | | | | | | | |
| Available poles | 2 - 24 | | 2 x (2-24) | | 2 x (2-24) | | 2 x (2-26) | | 2 x (2-28) | | 2 x (2-24) | | 2 x (2-24) | |



| | 20.93MHF | 21.93MHF | 20.94MHC | 21.94MHC | 20.94MH | 21.94MH | 20.94MHF | 21.94MHF | 20.90MA | 21.90M | 20.95MA | 21.95MA | 21.95MAF | |
|-------------------|-----------------|----------|-----------------|----------|-----------------|----------|-----------------|----------|-----------------|----------|-----------------|----------|----------|------|
| | | | | | | | | | | | | | | |
| | | | | | | | | | | | | | | |
| Pitch | 5.00mm (5.08mm) | | 5.00mm (5.08mm) | | 5.00mm (5.08mm) | | 5.00mm (5.08mm) | | 5.00mm (5.08mm) | | 5.00mm (5.08mm) | | 5.08mm | |
| Technical Data | UL | IEC | UL | IEC | UL | IEC | UL | IEC | UL | IEC | UL | IEC | UL | IEC |
| Rated voltage | 300V | 600V | 300V | 600V | 300V | 600V | 300V | 600V | 300V | 600V | 300V | 600V | 300V | 320V |
| Rated current | 15A | 18A | 15A | 18A | 15A | 18A | 15A | 18A | 15A | 18A | 15A | 18A | 15A | 20A |
| Wire range | | | | | | | | | | | | | | |
| Available options | 300V/15A | 320V/20A | 300V/15A | 320V/20A | 300V/15A | 320V/20A | 300V/15A | 320V/20A | 300V/15A | 320V/20A | 300V/15A | 320V/20A | | |
| Screw | | | | | | | | | | | | | | |
| Available poles | 2 x (2-24) | | 2 x (2-26) | | 2 x (2-28) | | 2 x (2-24) | | 2 - 24 | | 2 - 24 | | 2 - 24 | |



| | 21.97MV | 20.92MP | 21.92MP | 20.96MV | 21.96MV | 20.91MV | 21.91MV | 20.96MVF | 21.96MVF | 20.96MH | 21.96MH | 20.91MH | 21.91MH |
|-------------------|-----------|-------------------|-----------|-------------------|-------------------|-------------------|-------------------|-------------------|-------------------|-------------------|-------------------|-------------------|-------------------|
| Pitch | 5.08mm | 5.00mm (5.08mm) | | 7.50mm (7.62mm) | | 7.50mm (7.62mm) | | 7.50mm (7.62mm) | | 7.50mm (7.62mm) | | 7.50mm (7.62mm) | |
| Technical Data | UL IEC | UL IEC | UL IEC | UL IEC | UL IEC | UL IEC | UL IEC | UL IEC | UL IEC | UL IEC | UL IEC | UL IEC | UL IEC |
| Rated voltage | 300V 600V | 300V 600V | 300V 600V | 300V 750V | 300V 750V | 300V 750V | 300V 750V | 300V 750V | 300V 750V | 300V 750V | 300V 750V | 300V 750V | 300V 750V |
| Rated current | 15A 18A | 15A 18A | 15A 18A | 15A 17.5A | 15A 17.5A | 15A 17.5A | 15A 17.5A | 15A 17.5A | 15A 17.5A | 15A 17.5A | 15A 17.5A | 15A 17.5A | 15A 17.5A |
| Wire range | | | | | | | | | | | | | |
| Available options | | 300V/10A 320V/15A | | 300V/15A 320V/20A | 300V/15A 320V/20A | 300V/15A 320V/20A | 300V/15A 320V/20A | 300V/15A 320V/20A | 300V/15A 320V/20A | 300V/15A 320V/20A | 300V/15A 320V/20A | 300V/15A 320V/20A | 300V/15A 320V/20A |
| Screw | | | | | | | | | | | | | |
| Available poles | 2 - 22 | 2 - 24 | | 2 - 14 | | 2 - 14 | | 2 - 12 | | 2 - 14 | | 2 - 14 | |



| | 20.96MHF | 21.96MHF | 21.96MVL | 21.96MVL | 21.96MVL | 21.96MVL | 21.96MVL | 21.96MHL | 21.96MHL | 21.96MHL | 21.96MHL | 21.96MHL |
|-------------------|-------------------|----------|-----------|-----------|-----------|-----------|-----------|-----------|-----------|-----------|-----------|-----------|
| Pitch | 7.50mm (7.62mm) | | 7.62mm | 7.62mm | 7.62mm | 7.62mm | 7.62mm | 7.62mm | 7.62mm | 7.62mm | 7.62mm | 7.62mm |
| Technical Data | UL IEC | UL IEC | UL IEC | UL IEC | UL IEC | UL IEC | UL IEC | UL IEC | UL IEC | UL IEC | UL IEC | UL IEC |
| Rated voltage | 300V 750V | | 300V 450V | 300V 450V | 300V 450V | 300V 450V | 300V 450V | 300V 450V | 300V 450V | 300V 450V | 300V 450V | 300V 450V |
| Rated current | 15A 17.5A | | 30A 20A | 30A 20A | 30A 20A | 30A 20A | 30A 20A | 30A 20A | 30A 20A | 30A 20A | 30A 20A | 30A 20A |
| Wire range | | | | | | | | | | | | |
| Available options | 300V/15A 320V/20A | | | | | | | | | | | |
| Screw | | | | | | | | | | | | |
| Available poles | 2 - 12 | | 2 - 12 | 2 - 12 | 2 - 12 | 2 - 12 | 2 - 12 | 2 - 12 | 2 - 12 | 2 - 12 | 2 - 12 | 2 - 12 |



| | 21.96MHLC | 21.98MH | 21.98MHR | 21.98MHC | 21.99MH | 21.99MHR | 21.95MS |
|-------------------|-----------|-----------|-----------|-----------|------------------|------------------|--------------------------------|
| | | | | | | | |
| | | | | | | | |
| Pitch | 7.62mm | 8.80mm | 8.80mm | 8.80mm | 10.16mm | 10.16mm | 5.08mm |
| Technical Data | UL IEC | UL IEC | UL IEC | UL IEC | UL IEC | UL IEC | UL IEC |
| Rated voltage | 300V 450V | 600V 750V | 600V 750V | 600V 750V | 300V / 600V 750V | 300V / 600V 750V | 300V 250V |
| Rated current | 40A 20A | 30A 57A | 30A 57A | 65A 57A | 51A / 5A 76A | 51A / 5A 76A | 15A 12A |
| Wire range | | | | | | | 0.5-1.5mm ² / 28-14 |
| Available options | | | | | | | |
| Screw | | | | | | | |
| Available poles | 2 - 12 | 2 - 12 | 2 - 12 | 2 - 12 | 2 - 10 | 2 - 10 | 2 - 24 |



| | 21.95MSF | 21.96M/E | 21.155M/CP | 21.900M/CP |
|-------------------|-------------------------------|----------|------------|------------|
| | | | | |
| | | | | |
| Pitch | 5.08mm | | | |
| Technical Data | UL IEC | | | |
| Rated voltage | 300V 250V | | | |
| Rated current | 15A 12A | | | |
| Wire range | 0.5-15mm ² / 28-14 | | | |
| Available options | | | | |
| Screw | | | | |
| Available poles | 2 - 24 | | | |



- IMO Professional Pluggable interconnect solution
- Wide variety of plugs for pluggable terminal blocks
- UR/cUR approved
- Pitch sizes – from 2.5mm up to 10.16mm
- Rated voltage : 150-600 V, Rated current : 4 - 65A
- Screw or spring connection Push-in
- Many variations of the plugs allow connections from multiple orientations
- For more rigid connections some plugs are supplied with a mounting flange
- Customized printing available
- Big range of accessories

Key Applications:

- Power Supply
- Solar Inverter
- Industrial Control
- Fire and Security
- Lighting
- Instrumentation



- Soluzione interconnessione a spina professionale IMO
- Connessione altamente affidabile
- Passi da 2,5mm a 10,16mm
- Viti prigioniere
- Connessione polarizzata
- Dati di targa fino a 51A/600V
- Omologazione UL/CUL
- Prodotti selezionati con omologazione VDE
- Versioni con vite o morsetto a molla disponibili
- Personalizzazioni possibili
- Stampa possibile
- Colori alternativi disponibili

Applicazioni principali:

- Alimentazione
- Inverter solare
- Controllo industriale
- Antincendio e sicurezza
- Illuminazione
- Strumentazione



- Professionelle einsteckbare Verbindungslösung von IMO
- Hochzuverlässige Verbindung
- Abstände von 2,5 bis 10,16 mm
- Unverlierbare Schrauben
- Polariserte Verbindung
- Bemessung bis zu 51 A/600 V
- UL/CUL-zugelassen
- Ausgewählte Produkte mit VDE-Zulassung
- Schraub- oder Federklemmversionen erhältlich
- Maßgeschneiderte Designs erhältlich
- Druck verfügbar
- Alternative Farben erhältlich

Schlüsseinsatzbereiche:

- Stromversorgung
- Solarinverter
- Industrielle Kontrolle
- Feuer und Sicherheit
- Beleuchtungssysteme
- Instrumente



- Solución de interconexión enchufable profesional de IMO
- Conexión altamente fiable
- Pasos de 2,5mm a 10,16mm
- Tornillos cautivos
- Conexión polarizada
- Valores nominales hasta 51A/600 V
- Homologación UL/CUL
- Productos seleccionados con homologación VDE
- Disponibles versiones abrazadera de tornillo o de resorte
- Diseños personalizados disponibles
- Impresión disponible
- Colores alternativos disponibles

Aplicaciones clave:

- Alimentación de energía
- Inversor fotovoltaico
- Control industrial
- Incendios y seguridad.
- Iluminación
- Instrumentación



- La solution IMO d'interconnexion enfichable pour les professionnels
- Connexion extrêmement fiable
- Pas de 2,5 à 10,16mm
- Vis imperdables
- Connexion polarisée
- Valeurs nominales jusqu'à 51 A/600 V
- Homologué UL/CUL
- Produits sélectionnés avec homologation VDE
- Versions à serrage à vis ou à ressort disponibles
- Modèles sur mesure disponibles
- Repérage disponible
- Autres couleurs disponibles

Principales applications:

- Alimentation électrique
- Onduleurs solaires
- Contrôle industriel
- Incendie et sécurité
- Éclairage
- Instrumentation



- Широкий ассортимент соединительных разъемов для печатных плат
- UR/cUR сертификация
- Шаг от 2.5 мм до 10.16 мм
- Номинальное напряжение : 150-600 В, Номинальный ток : 4-65 А
- Штекеры доступны с различными направлениями подключения: параллельно или перпендикулярно оси провода
- Винтовые или пружинные (Push-in) технологии соединения
- Для наиболее прочного соединения штекеры поставляются с фланцем, закрепляемым винтами
- Возможность маркировки по желанию заказчика
- Полный ассортимент аксессуаров

Ключевые сферы применения:

- Электропитание
- Солнечный инвертор
- Промышленный контроль
- Системы пожарной безопасности и охраны
- Освещение
- Контрольно-измерительные приборы

Pluggable Terminal Blocks - Plugs

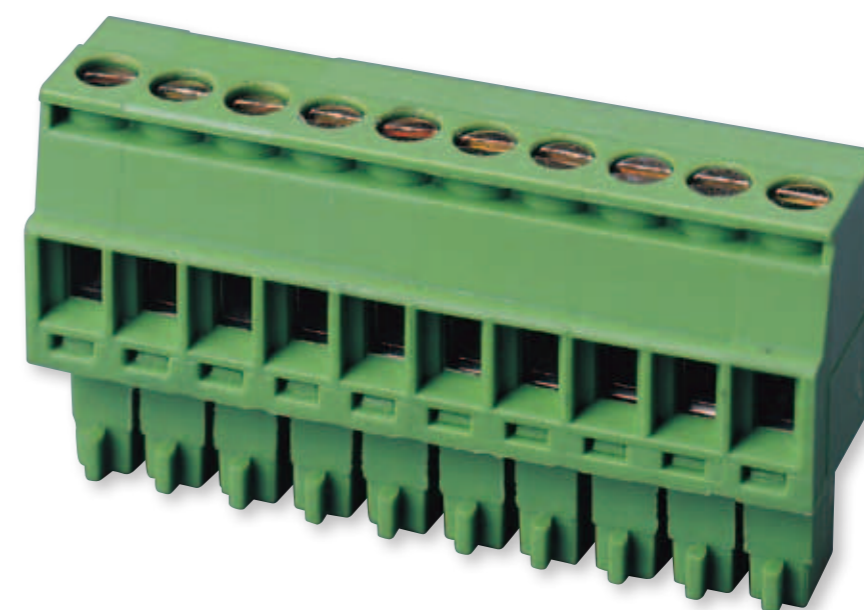
Kopfteile) Fassungen für einsteckbare Terminal-Blocks

Fiches pour blocs de jonction enfichables

Spine per blocchi terminali a spina

Enchufes para bloques de terminales enchufables

Разъемы для печатных плат - Штекеры





| | 20.2500M | 20.1552M | 20.1552MF | 20.1552MC | 21.1551M | 21.1551MF | 21.957M |
|-------------------|-----------------------------------|-----------------------------------|-----------------------------------|-----------------------------------|-------------------------------------|-------------------------------------|------------------------------------|
| | | | | | | | |
| | | | | | | | |
| Pitch | 2.50mm | 3.50mm | 3.50mm | 3.50mm | 3.81mm | 3.81mm | 5.08mm |
| Technical Data | UL IEC | UL IEC | UL IEC | UL IEC | UL IEC | UL IEC | UL IEC |
| Rated voltage | 150V 130V | 300V 250V | 300V 250V | 300V 250V | 300V 130V | 300V 130V | 300V 250V |
| Rated current | 4A 4A | 8A 6A | 8A 6A | 8A 6A | 8A 8A | 8A 8A | 10A 12A |
| Wire range | 0.5 mm ² / 28 - 20 AWG | 0.5-1 mm ² / 24-16 AWG | 0.5-1 mm ² / 24-16 AWG | 0.5-1 mm ² / 24-16 AWG | 0.5-1.5 mm ² / 28-16 AWG | 0.5-1.5 mm ² / 28-16 AWG | 0.5-2.5mm ² / 26-12 AWG |
| Available options | 150V/5A 250V/6A | | | | 300V/8A 250V/10A | 300V/8A 250V/10A | 300V/12A 320V/15A |
| Screw | | | | | | | |
| Available poles | 2 - 24 | 2 - 20 | 2 - 20 | 2 - 20 | 2 - 20 | 2 - 20 | 2 - 24 |



| | 21.957MF | 21.957MC | 21.957ML | 21.957MLF | 20.958M | 21.958M | 20.958MF | 21.958MF | 21.958MT |
|-------------------|-------------------------------------|-------------------------------------|-------------------------------------|-------------------------------------|-------------------------------------|-------------------------------------|-------------------------------------|-------------------------------------|------------------------------------|
| | | | | | | | | | |
| | | | | | | | | | |
| Pitch | 5.08mm | 5.08mm | 5.08mm | 5.08mm | 5.00mm (5.08mm) | 5.00mm (5.08mm) | 5.00mm (5.08mm) | 5.00mm (5.08mm) | 5.08mm |
| Technical Data | UL IEC | UL IEC | UL IEC | UL IEC | UL IEC | UL IEC | UL IEC | UL IEC | UL IEC |
| Rated voltage | 300V 250V | 300V 250V | 300V 130V | 300V 130V | 300V 250V | 300V 250V | 300V 250V | 300V 250V | 300V 250V |
| Rated current | 10A 12A | 10A 17.5A | 8A 8A | 8A 8A | 10A 12A | 10A 12A | 10A 12A | 10A 12A | 12A 12A |
| Wire range | 0.5-2.5 mm ² / 26-12 AWG | 0.5-1.5 mm ² / 26-12 AWG | 0.5-1.5 mm ² / 26-12 AWG | 0.5-1.5 mm ² / 28-16 AWG | 0.5-2.5 mm ² / 26-12 AWG | 0.5-2.5 mm ² / 26-12 AWG | 0.5-2.5 mm ² / 26-12 AWG | 0.5-2.5 mm ² / 26-12 AWG | 0.5-2.5mm ² / 24-12 AWG |
| Available options | 300V/12A 320V/15A | | | | | | | | |
| Screw | | | | | | | | | |
| Available poles | 2 - 24 | 2 - 24 | 2 - 12 | 2 - 24 | 2 - 24 | 2 - 24 | 2 - 24 | 2 - 24 | 2 - 24 (with twin connection) |



| | 21.958MTF | 21.959M | 21.959MF | 21.959MC | 21.967M | 21.967MF | 21.968M |
|-------------------|-------------------------------------|-------------------------------------|-------------------------------------|-------------------------------------|-----------|-----------|-----------|
| | | | | | | | |
| | | | | | | | |
| Pitch | 5.08mm | 5.08mm | 5.08mm | 5.08mm | 7.62mm | 7.62mm | 7.62mm |
| Technical Data | UL IEC | UL IEC | UL IEC | UL IEC | UL IEC | UL IEC | UL IEC |
| Rated voltage | 300V 250V | 300V 250V | 300V 250V | 300V 250V | 300V 250V | 300V 250V | 300V 250V |
| Rated current | 12A 12A | 12A 12A | 12A 12A | 12A 12A | 15A 15A | 15A 15A | 15A 15A |
| Wire range | 0.5-2.5 mm ² / 24-12 AWG | 0.5-2.5 mm ² / 24-12 AWG | 0.5-2.5 mm ² / 24-12 AWG | 0.5-2.5 mm ² / 24-12 AWG | 24-12 AWG | 24-12 AWG | 28-12 AWG |
| Available options | | | | | | | |
| Screw | | | | | | | |
| Available poles | 2 - 24 (with twin connection) | 2 - 24 (with twin connection) | 2 - 24 (with twin connection) | 2 - 24 (with twin connection) | 2 - 12 | 2 - 12 | 2 - 12 |



| 21.968MF | | |
|-------------------|-----------|------|
| | | |
| | | |
| Pitch | 7.62mm | |
| Technical Data | UL | IEC |
| Rated voltage | 300V | 250V |
| Rated current | 15A | 15A |
| Wire range | 24-12 AWG | |
| Available options | | |
| Screw | | |
| Available poles | 2 - 12 | |



| | 20.1550M | 21.1550M | 20.1550MF | 21.1550MF | 20.1500M | 21.1500M | 20.1500MF | 21.1500MF | 20.1510M | 21.1510M | 20.1510MF | 21.1510MF | 21.1570M | |
|-------------------|--|----------|--|-----------|--|----------|--|-----------|--|----------|--|-----------|---|----------|
| | | | | | | | | | | | | | | |
| | $3.50 \times (P-1) + 4.3$ $(3.81 \times (P-1) + 4.6)$ | | $3.50 \times (P-1) + 14.1$ $(3.81 \times (P-1) + 14.4)$ | | $3.50 \times (P-1) + 4.3$ $(3.81 \times (P-1) + 4.6)$ | | $3.50 \times (P-1) + 14.00$ $(3.81 \times (P-1) + 14.40)$ | | $3.50 \times (P-1) + 4.30$ $(3.81 \times (P-1) + 4.60)$ | | $3.50 \times (P-1) + 14.00$ $(3.81 \times (P-1) + 14.40)$ | | $3.81 \times (P-1) + 2.30 \times 2$ | |
| Pitch | 3.50mm (3.81mm) | | | | | | | | | | | | | |
| Technical Data | UL | IEC | UL | IEC | UL | IEC | UL | IEC | UL | IEC | UL | IEC | UL | IEC |
| Rated voltage | 300V | 320V | 300V | 320V | 300V | 320V | 300V | 320V | 300V | 320V | 300V | 320V | 300V | 320V |
| Rated current | 8A | 14A | 8A | 14A | 8A | 14A | 8A | 14A | 8A | 14A | 8A | 14A | 8A | 14A |
| Wire range | 0.2-1.5mm ² / 28 - 14 AWG | | | | | | | | | | | | | |
| Available options | 300V/8A | 250V/10A | 300V/8A | 250V/10A | 300V/8A | 250V/10A | 300V/8A | 250V/10A | 300V/8A | 250V/10A | 300V/8A | 250V/10A | 300V/8A | 250V/10A |
| Screw | M2 | | | | | | | | | | | | | |
| Available poles | 2 - 24 | | 2 - 24 | | 2 - 22 | | 2 - 20 | | 2 - 22 | | 2 - 20 | | 2 - 24 | |



| | 21.1570MF | 20.950M | 21.950M | 20.950MF | 21.950MF | 20.951M | 21.950MC | 20.910M | 21.910M | 20.910MF | 21.910MF | |
|-------------------|--|---------|--|----------|--|----------|---------------------|---------|--|----------|--|----------|
| | | | | | | | | | | | | |
| | 4.80 , $3.81 \times (P-1) + 4.60$, 4.80 | | $5.00 \times P$ $(5.08 \times P)$ | | $5.00 \times P + 10.00$ $(5.08 \times P + 10.16)$ | | $5.00 \times P$ | | $5.00 \times P$ $(5.08 \times P)$ | | $5.00 \times (P-1) + 15.00$ $(5.08 \times (P-1) + 15.24)$ | |
| Pitch | 3.81mm | | 5.00mm (5.08mm) | | 5.00mm (5.08mm) | | 5.00mm | | 5.00mm (5.08mm) | | 5.00mm (5.08mm) | |
| Technical Data | UL | IEC | UL | IEC | UL | IEC | UL | IEC | UL | IEC | UL | IEC |
| Rated voltage | 300V | 320V | 300V | 600V | 300V | 600V | 300V | 600V | 300V | 600V | 300V | 600V |
| Rated current | 8A | 14A | 15A | 18A | 15A | 18A | 15A | 18A | 15A | 18A | 15A | 18A |
| Wire range | 0.2-1.5 mm ² / 30-14 AWG | | | | | | | | | | | |
| Available options | | | 300V/15A | 320V/20A | 300V/15A | 320V/20A | | | 300V/15A | 320V/20A | 300V/15A | 320V/20A |
| Screw | M2 | | M2.5 | | M2.5 | | M2.5 | | M2.5 | | M2.5 | |
| Available poles | 2 - 22 | | 2 - 24 | | 2 - 24 | | 2 - 24 | | 2 - 24 | | 2 - 24 | |



| | 20.920M | 21.920M | 20.920MF | 21.920MF | 21.951ML | 21.951MLF | 21.950MT | 21.950MTF | 20.970M | 21.970M |
|-------------------|--------------------------------------|---------|--------------------------------------|----------|-------------------------------------|-----------|-------------------------------|-----------|--------------------------------------|----------|
| | | | | | | | | | | |
| | | | | | | | | | | |
| Pitch | 5.00mm (5.08mm) | | 5.00mm (5.08mm) | | 5.08mm | | 5.08mm | | 5.00mm (5.08mm) | |
| Technical Data | UL IEC | UL IEC | UL IEC | UL IEC | UL IEC | UL IEC | UL IEC | UL IEC | UL IEC | UL IEC |
| Rated voltage | 300V | 600V | 300V | 600V | 300V | 600V | 300V | 300V | 300V | 600V |
| Rated current | 15A | 18A | 15A | 18A | 12A | 14A | 12A | 16A | 15A | 18A |
| Wire range | 0.2-2.5mm ² / 30 - 12 AWG | | 0.2-2.5mm ² / 30 - 12 AWG | | 0.2-1.5 mm ² / 30-14 AWG | | 30-12 AWG | | 0.2-2.5mm ² / 30 - 12 AWG | |
| Available options | 300V/15A 320V/20A | | 300V/15A 320V/20A | | | | | | 300V/15A | 320V/20A |
| Screw | M2.5 | | M2.5 | | M2 | M2 | M2.5 | M2.5 | M2.5 | |
| Available poles | 2 - 24 | | 2 - 24 | | 2 - 24 | | 2 - 12 (with twin connection) | | 2 - 12 (with twin connection) | |



| | 20.970MF | 21.970MF | 21.970ML | 21.970MLF | 20.954M | 21.954M | 20.954MF | 21.954MF | 20.960M | 21.960M | 20.960MF | 21.960MF |
|-------------------|--------------------------------------|----------|-------------------------------------|-----------|-------------------------------------|---------|---------------------------------------|-------------------|-------------------------------------|-------------------|---------------------------------------|-------------------|
| | | | | | | | | | | | | |
| | | | | | | | | | | | | |
| Pitch | 5.00mm (5.08mm) | | 5.08mm | | 5.08mm | | 5.00mm (5.08mm) | | 7.50mm (7.62mm) | | 7.50mm (7.62mm) | |
| Technical Data | UL IEC | UL IEC | UL IEC | UL IEC | UL IEC | UL IEC | UL IEC | UL IEC | UL IEC | UL IEC | UL IEC | UL IEC |
| Rated voltage | 300V | 600V | 300V | 600V | 300V | 600V | 300V | 600V | 300V | 750V | 300V | 750V |
| Rated current | 15A | 18A | 12A | 14A | 12A | 14A | 15A | 18A | 15A | 17.5A | 15A | 17.5A |
| Wire range | 0.2-2.5mm ² / 30 - 12 AWG | | 0.2-1.5 mm ² / 28-14 AWG | | 0.2-1.5 mm ² / 28-14 AWG | | 0.2-2.5 mm ² / 28 - 12 AWG | | 0.2-2.5 mm ² / 28-12 AWG | | 0.5-2.5 mm ² / 28 - 12 AWG | |
| Available options | 300V/15A 320V/20A | | | | | | 300V/15A 320V/20A | 300V/15A 320V/20A | 300V/15A 320V/20A | 300V/15A 320V/20A | 300V/15A 320V/20A | 300V/15A 320V/20A |
| Screw | M2.5 | | M2 | | M2 | | M2.5 | | M2.5 | | M2.5 | |
| Available poles | 2 - 24 | | 2 - 24 | | 2 - 24 | | 2 - 24 | | 2 - 12 | | 2 - 12 | |



| | 20.961M | 21.961M | 20.961MF | 21.961MF | 20.962M | 21.962M | 20.962MF | 21.962MF | 21.963M | 21.963MF | 21.964M | |
|-------------------|---------------------------------------|---------|---------------------------------------|----------|---------------------------------------|---------|---------------------------------------|----------|-----------------------------------|----------|-----------------------------------|------|
| | | | | | | | | | | | | |
| | | | | | | | | | | | | |
| Pitch | 7.50mm (7.62mm) | | 7.50mm (7.62mm) | | 7.50mm (7.62mm) | | 7.50mm (7.62mm) | | 7.62mm | 7.62mm | 7.62mm | |
| Technical Data | UL | IEC | UL | IEC | UL | IEC | UL | IEC | UL | IEC | UL | IEC |
| Rated voltage | 300V | 750V | 300V | 750V | 300V | 750V | 300V | 750V | 300V | 800V | 300V | 800V |
| Rated current | 15A | 17.5A | 15A | 17.5A | 15A | 17.5A | 15A | 17.5A | 30A | 32A | 30A | 32A |
| Wire range | 0.5-2.5 mm ² / 28 - 12 AWG | | 0.5-2.5 mm ² / 28 - 12 AWG | | 0.5-2.5 mm ² / 28 - 12 AWG | | 0.5-2.5 mm ² / 28 - 12 AWG | | 0.5-4 mm ² / 30-10 AWG | | 0.5-4 mm ² / 30-10 AWG | |
| Available options | 300V/15A 320V/20A | | 300V/15A 320V/20A | | 300V/15A 320V/20A | | 300V/15A 320V/20A | | | | | |
| Screw | M2.5 | | M2.5 | | M2.5 | | M2.5 | | M3 | | M3 | |
| Available poles | 2 - 12 | | 2 - 12 | | 2 - 12 | | 2 - 12 | | 2 - 12 | | 2 - 12 | |



| | 21.964MF | 21.965M | 21.965MF | 21.965MC | 21.966M | 21.966MF | 21.980M | |
|-------------------|-----------------------------------|---------|----------------------------------|----------|----------------------------------|----------|-------------------------------------|------|
| | | | | | | | | |
| | | | | | | | | |
| Pitch | 7.62mm | 7.62mm | 7.62mm | 7.62mm | 7.62mm | 7.62mm | 8.80mm | |
| Technical Data | UL | IEC | UL | IEC | UL | IEC | UL | IEC |
| Rated voltage | 300V | 800V | 600V | 800V | 600V | 800V | 600V | 750V |
| Rated current | 30A | 32A | 40A | 41A | 40A | 41A | 30A | 57A |
| Wire range | 0.5-4 mm ² / 30-10 AWG | | 0.5-6 mm ² / 30-8 AWG | | 0.5-6 mm ² / 30-8 AWG | | 0.5-10 mm ² / 18 - 8 AWG | |
| Available options | | | | | | | | |
| Screw | M3 | | M3 | | M3 | | M4 | |
| Available poles | 2 - 12 | | 2 - 12 | | 2 - 12 | | 2 - 12 | |



| | 21.980MC | 21.990M | 21.1530MV | 21.1530MH | 21.1531M | 21.1531MF | 21.956MV |
|-------------------|-----------------------------------|------------------|-------------------------------------|-----------|-----------|-----------|-------------------|
| Pitch | 8.8mm | 10.16mm | 3.81mm | 3.81mm | 3.81mm | 3.81mm | 5.08mm |
| Technical Data | UL IEC | UL IEC | UL IEC | UL IEC | UL IEC | UL IEC | UL IEC |
| Rated voltage | 600V 750V | 300V / 600V 750V | 300V | 300V | 300V | 300V | 300V 250V |
| Rated current | 65A 57A | 51A / 5A 76A | 8A | 8A | 8A | 8A | 12A 12A |
| Wire range | 0.5-10 mm ² / 20-6 AWG | | 0.5-16 mm ² / 16 - 6 AWG | | 30-14 AWG | | 300V/15A 320V/20A |
| Available options | M4 | | M4 | | M2 | | M2 |
| Screw | M4 | | M4 | | M2 | | M2 |
| Available poles | 2 - 12 | 2 - 10 | 2 - 16 | 2 - 16 | 2 - 24 | 2 - 24 | 2 - 24 |

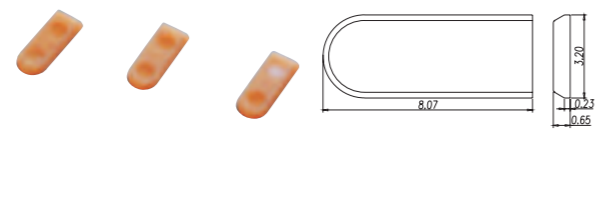


| | 21.956MVF | 21.956MH | 21.956MHF | 21.95MVT | 21.95MVTF | 21.95MHT | 21.95MHTF |
|-------------------|-------------------------------------|-------------------|-------------------------------------|-----------|-------------------------------------|-------------------|-------------------------------------|
| Pitch | 5.08mm | 5.08mm | 5.08mm | 5.08mm | 5.08mm | 5.08mm | 5.08mm |
| Technical Data | UL IEC | UL IEC | UL IEC | UL IEC | UL IEC | UL IEC | UL IEC |
| Rated voltage | 300V 250V | 300V 250V | 300V 250V | 300V 250V | 300V 250V | 300V 250V | 300V 250V |
| Rated current | 12A 12A | 15A 12A | 12A 12A | 12A 12A | 12A 12A | 12A 12A | 12A 12A |
| Wire range | 0.5-2.5 mm ² / 24-12 AWG | | 0.5-2.5 mm ² / 24-12 AWG | | 0.5-2.5 mm ² / 24-12 AWG | | 0.5-2.5 mm ² / 24-12 AWG |
| Available options | 300V/15A 320V/20A | 300V/15A 320V/20A | 300V/15A 320V/20A | M2.5 | | 300V/15A 320V/20A | 300V/15A 320V/20A |
| Screw | M2.5 | | M2.5 | | M2.5 | | M2.5 |
| Available poles | 2 - 20 | 2 - 24 | 2 - 20 | 2 - 20 | 2 - 20 | 2 - 12 | 2 - 12 |

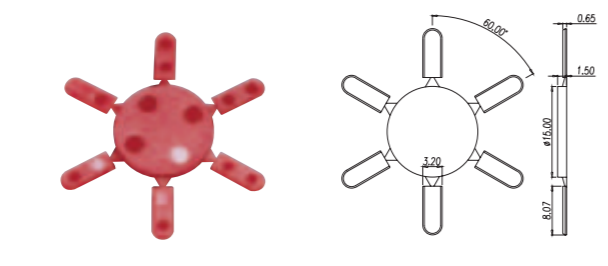


| | 21.953M | | 20.952M | |
|-------------------|-------------------------------------|----------|---------------------------------------|------|
| Pitch | 5.08mm | | 5.00mm | |
| Technical Data | UL | IEC | UL | IEC |
| Rated voltage | 300V | 600V | 300V | 250V |
| Rated current | 15A | 18A | 16A | 12A |
| Wire range | 0.2-2.5 mm ² / 28-12 AWG | | 0.5-2.5 mm ² / 28 - 12 AWG | |
| Available options | 300V/15A | 320V/20A | | |
| Screw | M2 | | M2.5 | |
| Available poles | 3 - 16 | | 2 - 14 | |

21.950M/CP



21.950M/6CP





- 2.5mm to 20mm pitches
- Up to 57A/600V Rating
- Convenient and fast connection
- UR/cUR Approved
- Modular design
- Highly reliable
- Anti vibration
- Single, two, three and four levels
- Custom designs available
- Printing available
- Alternative colours available

Key Applications:

- Power Supply
- Solar Inverter
- Industrial Control
- Fire and Security
- Lighting
- Instrumentation
- Telecommunication



- Abstände von 2,5 bis 20 mm
- Bemessung bis zu 57 A/600 V
- Praktische und schnelle Verbindung
- UL/CUL-zugelassen
- Ausgewählte Produkte mit VDE-Zulassung
- Modulares Design
- Hochzuverlässig
- Schwingungsdämpfend
- Hergestellt nach EC60998 und UL5039.
- Ein-, zwei-, drei- und vierstufig
- Maßgeschneiderte Designs erhältlich
- Druck verfügbar
- Alternative Farben erhältlich

Schlüsseinsatzbereiche:

- Stromversorgung
- Solarinverter
- Industrielle Kontrolle
- Feuer und Sicherheit
- Beleuchtungssysteme
- Instrumente
- Telekommunikation



- Pas de 2,5 à 20 mm
- Valeurs nominales jusqu'à 57 A/600 V
- Connexion pratique et rapide
- Homologué UL/CUL
- Produits sélectionnés avec homologation VDE
- Conception modulaire
- Extrêmement fiable
- Anti-vibrations
- Fabrication conforme à EC60998 et UL5039.
- Modèles à un, deux, trois ou quatre niveaux
- Modèles sur mesure disponibles
- Repérage disponible
- Autres couleurs disponibles

Principales applications:

- Alimentation électrique
- Onduleurs solaires
- Contrôle industriel
- Incendie et sécurité
- Éclairage
- Instrumentation
- Télécommunications



- Passi da 2,5mm a 20mm.
- Dati di targa fino a 57A/600V.
- Connessione semplice e veloce.
- Omologazione UL/CUL.
- Prodotti selezionati con omologazione VDE.
- Modularità.
- Alta affidabilità
- Antivibrazione.
- Prodotti nel rispetto di EC60998 e UL5039.
- Uno, due, tre e quattro livelli.
- Personalizzazioni possibili.
- Stampa possibile.
- Colori alternativi disponibili

Applicazioni principali:

- Alimentazione
- Inverter solare.
- Controllo industriale.
- Antincendio e sicurezza.
- Illuminazione.
- Strumentazione.
- Telecomunicazioni.



- Pasos de 2,5mm a 20mm.
- Valor nominal hasta 57 A/600 V.
- Conexión cómoda y rápida.
- Homologación UL/CUL.
- Productos seleccionados con homologación VDE.
- Diseño modular.
- Altamente fiable.
- Antivibración.
- Fabricado según EC60998 y UL5039.
- Uno, dos, tres y cuatro niveles.
- Diseños personalizados disponibles.
- Impresión disponible.
- Colores alternativos disponibles.

Aplicaciones clave:

- Alimentación de energía.
- Inversor fotovoltaico.
- Control industrial.
- Incendios y seguridad.
- Iluminación.
- Instrumentación.
- Telecomunicaciones.



- Шаг от 2,5 мм до 20 мм.
- Максимальный ток 57А при напряжении 600 В.
- Удобное и быстрое подключение
- UR/cUR сертификация.
- Модульный дизайн
- Высокая надежность и отличная устойчивость к вибрации.
- Двух-, трех- и четырехрядные многоуровневые клеммы.
- Возможно изготовление на заказ
- Возможность печати на клеммах по предварительному заказу.
- Клеммы доступны в разных цветовых решениях.

Ключевые сферы применения:

- Электропитание.
- Солнечный инвертор.
- Промышленный контроль.
- Системы пожарной безопасности и охраны.
- Освещение.
- Контрольно-измерительные приборы.
- Телекоммуникация.

Screwless Terminal Blocks

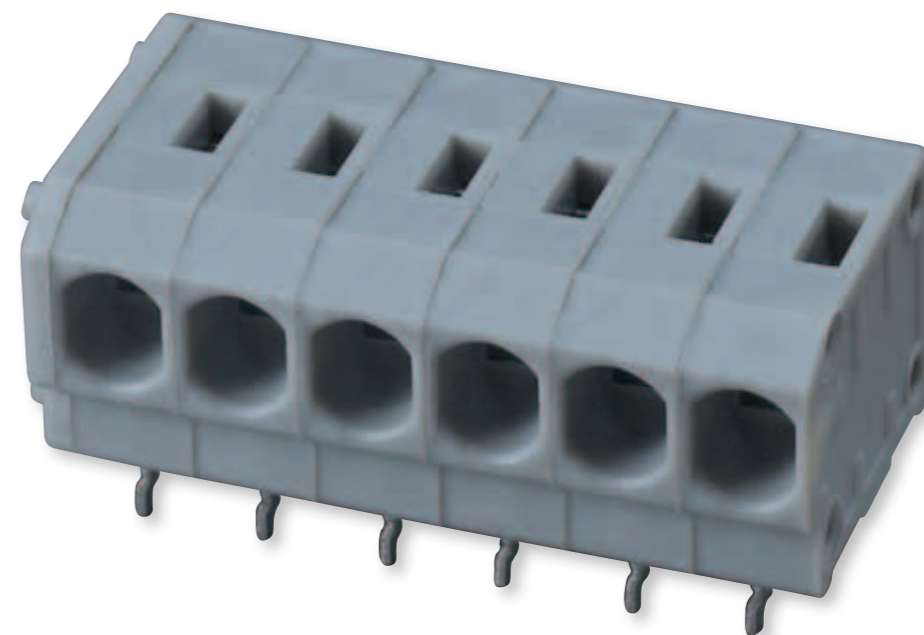
Schraubenlose Terminal Blocks (Steckverbindung)

Blocs de jonction sans vis

Blocchi terminali senza vite

Bloques de terminales sin tornillos

Клеммы с пружинным зажимом





| | 20.3301M | 20.3302M | 21.5101M | 21.5201M | 21.5100M | 21.5200M | 20.3303M |
|-------------------|---------------------------------|---------------------------------|---------------------------------|---------------------------------|---------------------------------|---------------------------------|-------------------------------|
| | | | | | | | |
| | | | | | | | |
| Pitch | 2.50mm | 2.50mm | 2.54mm | 2.54mm | 2.54mm | 2.54mm | 3.50mm |
| Technical Data | UL IEC | UL IEC | UL IEC | UL IEC | UL IEC | UL IEC | UL IEC |
| Rated voltage | 300V 450V | 150V 130V | 150V 130V | 150V 130V | 150V 250V | 150V 250V | 300V 450V |
| Rated current | 2A 2A | 2A 2A | 5A 5A | 5A 5A | 5A 12A | 5A 12A | 2A 2A |
| Wire range | 0.5 mm ² / 28-20 AWG | 0.5 mm ² / 28-20 AWG | 0.5 mm ² / 28-20 AWG | 0.5 mm ² / 28-20 AWG | 0.5 mm ² / 26-20 AWG | 0.5 mm ² / 26-20 AWG | 1 mm ² / 28-16 AWG |
| Available options | 300V/4A 250V/6A | | 150V/5A 130V/6A | 150V/5A 130V/6A | 150V/2A 130V/6A | 150V/2A 130V/6A | 300V/7A 400V/5A |
| Screw | | | | | | | |
| Available poles | 2 - 24 | 2 - 24 | 2 - 24 | 2 - 24 | 2 - 24 | 2 - 24 | 2 - 24 |



| | 20.3304M | 21.4000M | 21.4102M | 21.4300M | 21.4103M | 20.4100M | 20.4101M |
|-------------------|-------------------------------|---------------------------------------|---------------------------------------|-------------------------------------|-------------------------------------|-------------------------------------|-------------------------------------|
| | | | | | | | |
| | | | | | | | |
| Pitch | 3.50mm | 3.81mm | 3.81mm | 3.96mm | 3.96mm | 5.00mm | 5.00mm |
| Technical Data | UL IEC | UL IEC | UL IEC | UL IEC | UL IEC | UL IEC | UL IEC |
| Rated voltage | 300V 130V | 300V 250V | 300V 250V | 300V 250V | 300V 250V | 300V 450V | 300V 450V |
| Rated current | 2A 2A | 10A 17.5A | 10A 17.5A | 10A 17.5A | 10A 17.5A | 10A 24A | 10A 24A |
| Wire range | 1 mm ² / 28-16 AWG | 0.5-1.5 mm ² / 20 - 14 AWG | 0.5-1.5 mm ² / 20 - 14 AWG | 0.5-1.5 mm ² / 20-14 AWG | 0.5-1.5 mm ² / 20-14 AWG | 0.5-2.5 mm ² / 20-14 AWG | 0.5-2.5 mm ² / 20-14 AWG |
| Available options | | 300V/5A 250V/10A | 300V/5A 250V/15A | | | 300V/5A 250V/10A | 300V/5A 250V/15A |
| Screw | | | | | | | |
| Available poles | 2 - 24 | 2 - 24 | 2 - 24 | 2 - 24 | 2 - 24 | 2 - 24 | 2 - 24 |



| | 20.5301M | 20.5401M | 21.5300M | 21.5400M | 20.4500M | 20.4400M | 21.4104M |
|-------------------|-------------------------------------|-------------------------------------|-------------------------------------|-------------------------------------|--------------------------------------|-------------------------------------|-------------------------------------|
| Pitch | 5.00mm | 5.00mm | 5.08mm | 5.08mm | 5.00mm | 7.50mm | 7.50mm |
| Technical Data | UL IEC | UL IEC | UL IEC | UL IEC | UL IEC | UL IEC | UL IEC |
| Rated voltage | 300V 250V | 300V 250V | 300V 450V | 300V 450V | 300V 450V | 300V 750V | 300V 750V |
| Rated current | 10A 15A | 10A 15A | 10A 17.5A | 10A 17.5A | 10A 12A | 10A 24A | 10A 24A |
| Wire range | 0.5-1.5 mm ² / 26-16 AWG | 0.5-1.5 mm ² / 26-16 AWG | 0.5-1.5 mm ² / 22-14 AWG | 0.5-1.5 mm ² / 22-14 AWG | 0.5-0.75 mm ² / 24-18 AWG | 0.5-2.5 mm ² / 20-14 AWG | 0.5-2.5 mm ² / 20-14 AWG |
| Available options | | | 300V/10A 250V/15A | 300V/10A 250V/15A | | 300V/5A 250V/10A | 300V/5A 250V/15A |
| Screw | | | | | | | |
| Available poles | 2 - 24 | 2 - 24 | 2 - 24 | 2 - 24 | 2 - 24 | 2 - 24 | 2 - 24 |



| | 21.5500M | 21.5600M | 20.4105M |
|-------------------|-------------------------------------|-------------------------------------|--------------------------------------|
| Pitch | 7.62mm | 7.62mm | 7.50mm |
| Technical Data | UL IEC | UL IEC | UL IEC |
| Rated voltage | 300V 750V | 300V 750V | 300V 750V |
| Rated current | 10A 17.5A | 10A 17.5A | 10A 12A |
| Wire range | 0.5-1.5 mm ² / 22-14 AWG | 0.5-1.5 mm ² / 22-14 AWG | 0.5-0.75 mm ² / 24-18 AWG |
| Available options | 300V/10A 250V/15A | 300V/10A 250V/15A | |
| Screw | | | |
| Available poles | 2 - 24 | 2 - 24 | 2 - 24 |



| | 20.3003M | 21.3003M | 20.3004M | 21.3004M | 20.3000M | 21.3000M | 20.3001M | 21.3001M | 20.3101M | 21.3101M | 20.3111M | 21.3111M | 21.4200M | |
|-------------------|---------------------------------|----------|----------------------------------|----------|-------------------------------------|----------|-------------------------------------|----------|--------------------------------------|----------|--------------------------------------|----------|-------------------------------------|------|
| | | | | | | | | | | | | | | |
| | | | | | | | | | | | | | | |
| Pitch | 2.50mm (2.54mm) | | 2.50mm (2.54mm) | | 5.00mm (5.08mm) | | 5.00mm (5.08mm) | | 5.00mm (5.08mm) | | 5.00mm (5.08mm) | | 5.08mm | |
| Technical Data | UL IEC | UL IEC | UL IEC | UL IEC | UL IEC | UL IEC | UL IEC | UL IEC | UL IEC | UL IEC | UL IEC | UL IEC | UL IEC | |
| Rated voltage | 300V | 130V | 300V | 130V | 300V | 450V | 300V | 450V | 300V | 450V | 300V | 450V | 300V | 450V |
| Rated current | 4A | 6A | 4A | 6A | 15A | 24A | 15A | 24A | 15A | 24A | 15A | 24A | 14A | 12A |
| Wire range | 0.5 mm ² / 28-20 AWG | | 0.5mm ² / 28 - 20 AWG | | 0.5-2.5 mm ² / 28-12 AWG | | 0.5-2.5 mm ² / 28-12 AWG | | 0.5-2.5mm ² / 28 - 12 AWG | | 0.5-2.5mm ² / 28 - 12 AWG | | 0.5-1.5 mm ² / 28-14 AWG | |
| Available options | | | | | 300V/10A | 250V/15A | 300V/10A | 250V/15A | | | | | | |
| Screw | | | | | | | | | | | | | | |
| Available poles | 2 - 24 | | 2 - 24 | | 2 - 24 | | 2 - 24 | | 2 - 24 | | 2 - 24 | | 2 - 24 | |



| | 21.4200MF | 20.3200M | 20.6002M | 21.6002M | 20.6003M | 21.6003M | 20.6004M | 21.6004M | 20.3010M | 21.3010M | 20.3011M | 21.3011M |
|-------------------|-------------------------------------|----------|-----------------------------------|----------|-------------------------------------|----------|-------------------------------------|----------|-------------------------------------|----------|-------------------------------------|----------|
| | | | | | | | | | | | | |
| | | | | | | | | | | | | |
| Pitch | 5.08mm | 5.00mm | 5.00mm (5.08mm) | | 5.00mm (5.08mm) | | 5.00mm (5.08mm) | | 7.50mm (7.62mm) | | 7.50mm (7.62mm) | |
| Technical Data | UL IEC | UL IEC | UL IEC | UL IEC | UL IEC | UL IEC | UL IEC | UL IEC | UL IEC | UL IEC | UL IEC | UL IEC |
| Rated voltage | 300V | 450V | 300V | 250V | 300V | 450V | 300V | 450V | 300V | 450V | 300V | 450V |
| Rated current | 14A | 12A | 15A | 24A | 10A | 24A | 10A | 24A | 15A | 24A | 15A | 24A |
| Wire range | 0.5-1.5 mm ² / 28-14 AWG | | 0.5-4 mm ² / 28-12 AWG | | 0.5-2.5 mm ² / 28-12 AWG | | 0.5-2.5 mm ² / 28-12 AWG | | 0.5-2.5 mm ² / 28-12 AWG | | 0.5-2.5 mm ² / 28-12 AWG | |
| Available options | | | | | | | | | 300V/10A | 250V/15A | | |
| Screw | | | | | | | | | | | | |
| Available poles | 2 - 24 | 2 - 24 | 2 x (2 - 12) | | 3 x (2 - 12) | | 4 x (2 - 12) | | 2 - 24 | | 2 - 24 | |



| | 20.3102M | 21.3102M | 20.3112M | 21.3112M | 20.3201M | 20.3211M | 20.4201M | 20.3020M | 21.3020M | 20.3021M | 21.3021M | |
|-------------------|--------------------------------------|----------|--------------------------------------|----------|-----------------------------------|----------|-----------------------------------|----------|-------------------------------------|----------|-------------------------------------|------|
| | | | | | | | | | | | | |
| | | | | | | | | | | | | |
| Pitch | 7.50mm (7.62mm) | | 7.50mm (7.62mm) | | 7.50mm | | 7.50mm | | 10.00mm (10.16mm) | | 10.00mm (10.16mm) | |
| Technical Data | UL | IEC | UL | IEC | UL | IEC | UL | IEC | UL | IEC | UL | IEC |
| Rated voltage | 300V | 450V | 300V | 450V | 300V | 750V | 300V | 450V | 300V/600V | 750V | 300V/600V | 750V |
| Rated current | 15A | 24A | 15A | 24A | 15A | 24A | 30A | 12A | 15A/5A | 24A | 15A/5A | 24A |
| Wire range | 0.5-2.5mm ² / 28 - 12 AWG | | 0.5-2.5mm ² / 28 - 12 AWG | | 0.5-4 mm ² / 28-12 AWG | | 0.5-6 mm ² / 26-10 AWG | | 0.5-2.5 mm ² / 28-12 AWG | | 0.5-2.5 mm ² / 28-12 AWG | |
| Available options | | | | | | | | | 300V/10A | | 250V/15A | |
| Screw | | | | | | | | | | | | |
| Available poles | 2 - 24 | | 2 - 24 | | 2 - 24 | | 2 - 24 | | 2 - 24 | | 2 - 24 | |



| | 20.3222M | 20.3202M | 20.3212M | 20.3103M | 21.3103M | 20.3113M | 21.3113M | 20.3223M | 20.3213M | | | |
|-------------------|-----------------------------------|----------|-----------------------------------|----------|-----------------------------------|----------|-------------------------------------|----------|-----------------------------------|------|-----------------------------------|-------|
| | | | | | | | | | | | | |
| | | | | | | | | | | | | |
| Pitch | 10.00mm | | 10.00mm | | 10.00mm | | 10.00mm (10.16mm) | | 12.50mm | | 12.5mm | |
| Technical Data | UL | IEC | UL | IEC | UL | IEC | UL | IEC | UL | IEC | UL | IEC |
| Rated voltage | 300V | 450V | 300V | 1000V | 300V/600V | 1000V | 300V/600V | 750V | 300V | 750V | 600V | 1000V |
| Rated current | 57A | 76A | 15A | 24A | 30A/5A | 57A | 15A/5A | 24A | 57A | 76A | 30A | 57A |
| Wire range | 0.5-16 mm ² / 24-6 AWG | | 0.5-4 mm ² / 28-12 AWG | | 0.5-6 mm ² / 26-10 AWG | | 0.5-2.5 mm ² / 28-12 AWG | | 0.5-16 mm ² / 24-6 AWG | | 0.5-6 mm ² / 26-10 AWG | |
| Available options | | | | | | | | | | | | |
| Screw | | | | | | | | | | | | |
| Available poles | 2 - 24 | | 2 - 24 | | 2 - 24 | | 2 - 24 | | 2 - 24 | | 2 - 24 | |



| | 20.3224M | 20.3225M |
|-------------------|-----------------------------------|-----------------------------------|
| | | |
| Pitch | 15.00mm | 20.00mm |
| Technical Data | UL IEC | UL IEC |
| Rated voltage | 300V/600V 1000V | 600V 1000V |
| Rated current | 57A/5A 76A | 57A 76A |
| Wire range | 0.5-16 mm ² / 24-6 AWG | 0.5-16 mm ² / 24-6 AWG |
| Available options | | |
| Screw | | |
| Available poles | 2 - 24 | 2 - 24 |

IMO Worldwide Offices

IMO Precision Controls Limited

1000 North Circular Road
Staples Corner
London NW2 7JP
United Kingdom

Tel: 020 8452 6444
Fax: 020 8450 2274
Email: imo@imopc.com
Web: www.imopc.com

IMO Jeambrun Automation SAS

Centre D'Affaires Rocroy
30, Rue de Rocroy
94100 Saint-Maur-Des-Fosses
France

Tel: 0800 912 712 (n° gratuit)
Fax: 0145 134 737
Email: imo-fr@imopc.com
Web: www.imojeambrun.fr

IMO Automazione

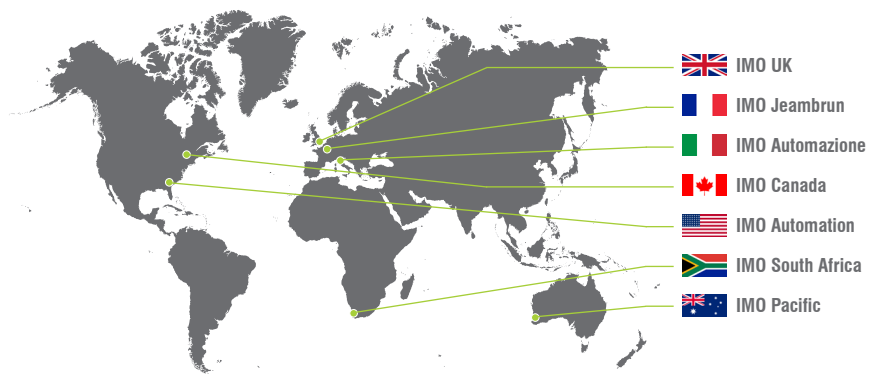
Via Ponte alle Mosse, 61
50144 Firenze (FI)
Italia

Tel: 800 930 872 (toll free)
Fax: 8000 452 6445
Email: imo-it@imopc.com
Web: www.imopc.it

IMO Canada

Unit 32 - B - North
18 Stratheam Avenue, Brampton
Ontario L6T 4Y2
Canada

Tel: 905 799 9237 (local)
Fax: 905 799 0450
Email: imo-ca@imopc.com
Web: www.imopc.com



IMO Automation LLC

101 Colony Park Drive, Suite 300
Cumming
Georgia 30040
USA

Tel: 404 476 8810
Fax: 404 476 8811
Email: imo-usa@imopc.com
Web: www.imoautomation.com

IMO South Africa (Pty) Ltd

G16 Centurion Business Park
Montague Gardens
Cape Town 7441
South Africa

Tel: 021 551 1787
Fax: 021 555 0676
Email: info@imopc.co.za
Web: www.imopc.co.za

IMO Pacific Pty Ltd

1/6 Dillington Pass
Landsdale
Perth WA 6065
Australia

Tel: 08 9302 5246 (local)
Fax: 08 9303 9908
Email: sales@imopacific.com.au
Web: www.imopacific.com.au